



## MOST POPULAR

**B&B Pipe & Industrial Tools** - The pipe jacks and pipe stands are backed with over 30 years of manufacturing experience. All pipe jacks and pipe stands are rated with at least a 2:1 safety ratio that is third party tested. We have made B&B pipe jacks the strongest, most durable products on the market. B&B also offers an extensive range of head options for any pipe fabrication application.



4100 - Fixed leg pipe jack  
(tri pipe stand)  
(includes V-head)

### SPECIFICATIONS

- 2,500 lbs / 1,135 kg load capacity
- Third party tested with at least a 2:1 safety ratio.
- Oversized 10" V-head for increased safety.
- Oversized square tube legs and braces for increased durability.
- 1½" (1.5") ACME rod is largest in the industry.
- Quick lock washer height adjustment for easy use.
- More head options than any other manufacturer.
- Increased width stance for better stability.
- Square tube bracing offers additional strength and rigidity.
- Safety washer can be locked on to base for increased operator safety.




MAX.  
49" /  
1,245 mm

MIN.  
28" /  
711.2 mm



3900 - Folding leg pipe jack (tri pipe stand)  
(includes V-head)

PART NO.	4100		
DESCRIPTION: Fixed leg pipe jack (tri pipe stand) (includes V-head)			
LOAD CAPACITY		SHIPPING WEIGHT	
2,500 lbs	1,135 kg	19.85 lbs	9.00 kg

PART NO.	3900		
DESCRIPTION: Folding leg pipe jack (tri pipe stand) (includes V-head)			
LOAD CAPACITY		SHIPPING WEIGHT	
2,500 lbs	1,135 kg	22.30 lbs	10.10 kg



\* SUITABLE FOR STAINLESS STEEL

PART NO.	90002		
DESCRIPTION: Steel wheel roller head			
LOAD CAPACITY		SHIPPING WEIGHT	
2,000 lbs	910 kg	10.80 lbs	4.90 kg

PART NO.	* 90005		
DESCRIPTION: Stainless steel wheel roller head			
LOAD CAPACITY		SHIPPING WEIGHT	
2,000 lbs	910 kg	10.80 lbs	4.90 kg

PART NO.	* 90003		
DESCRIPTION: Phenolic wheel roller head			
LOAD CAPACITY		SHIPPING WEIGHT	
1,000 lbs	450 kg	7.30 lbs	3.30 kg

PART NO.		90060 / * 90061		
DESCRIPTION: Steel wheel heads (slip on style) (pair) / Stainless steel wheel heads (slip on style) (pair)				
LOAD CAPACITY		SHIPPING WEIGHT		
1,000 lbs	450 kg	7.30 lbs	3.30 kg	

PART NO.		* 90032		
DESCRIPTION: Phenolic wheel heads (slip on style) (pair)				
LOAD CAPACITY		SHIPPING WEIGHT		
1,000 lbs	450 kg	4.40 lbs	2.00 kg	

PART NO.	* 90000		
DESCRIPTION: Stainless steel ball transfer heads (slip on style) (pair)			
LOAD CAPACITY		SHIPPING WEIGHT	
1,000 lbs	450 kg	5.50 lbs	2.50 kg

PART NO.		* 90004		
DESCRIPTION: Stainless steel head (slip on style) (pair)				
LOAD CAPACITY		SHIPPING WEIGHT		
3,500 lbs	1,585 kg	2.20 lbs	1.00 kg	

PART NO.	90033		
DESCRIPTION: Pipe chain vice head (0.5 - 6")			
LOAD CAPACITY		SHIPPING WEIGHT	
550 lbs	250 kg	14.30 lbs	6.50 kg

PART NO.	90019		
DESCRIPTION: Conveyor roller head			
LOAD CAPACITY		SHIPPING WEIGHT	
550 lbs	250 kg	9.40 lbs	4.25 kg

PART NO.	90021		
DESCRIPTION: Conveyor V-head			
LOAD CAPACITY		SHIPPING WEIGHT	
550 lbs	250 kg	9.40 lbs	4.25 kg

PART NO.	90001	<div>5" / 127 mm</div> 	
DESCRIPTION: V-head			
LOAD CAPACITY		SHIPPING WEIGHT	
2,500 lbs	1,135 kg	7.50 lbs	3.40 kg



B&B Pipe & Industrial Tools - Besides the popular regular fixed (4100) and folding (3900) pipe jacks, B&B also offers alternative pipe jacks with lower working heights.

These variations (available in fixed and folding versions) offer the same quality, versatility and reliability for the operator.

The low profile jacks are popular in general pipe fabrication, installation and maintenance work as well as in mechanical workshops.

**4000 - LOW PROFILE FOLDING LEG PIPE JACK (INC. V-HEAD)**



**4200 STUBBY FIXED LEG PIPE JACK (INC. V-HEAD)**



**4240 - SUPER STUBBY FIXED LEG PIPE JACK (INC. V-HEAD)**



**SPECIFICATIONS**

- 2,500 lbs / 1,135 kg load capacity
- Three sizes:
  - 22 - 39" / 558.8 - 990.6 mm  
low profile folding leg
  - 20 - 37" / 508 - 939.8 mm  
low profile fixed leg (stubby)
  - 16 - 26" / 406.4 - 660.4 mm  
super low profile fixed leg (super stubby)
- Third party tested with at least a 2:1 safety ratio
- Oversized 10" V-head for increased safety
- Oversized square tube legs and braces for increased durability
- 1½" (1.5") ACME rod is largest in the industry
- Quick lock washer height adjustment for easy use
- More head options than any other manufacturer
- Increased width stance for better stability
- Square tube bracing offers additional strength and rigidity
- Safety washer can be locked on to base for increased operator safety

PART NO.	DESCRIPTION	LOAD CAPACITY		DIMENSIONS (L x W x H)		ADJUSTMENT HEIGHT		SHIPPING WEIGHT	
4000	Low Profile Folding Leg Pipe Jack (inc V-head)	2,500 lbs	1,135 kg	22 x 22 x 22"	558.8 x 558.8 x 558.8 mm	22 - 39"	558.8 - 990.6 mm	20.00 lbs	9.00 kg
4200	Stubby Fixed Leg Pipe Jack (inc V-head)	2,500 lbs	1,135 kg	15 x 14 x 20"	381 x 355.6 x 508 mm	20 - 37"	508 - 939.8 mm	18.00 lbs	8.00 kg
4240	Super Stubby Fixed Leg Pipe Jack (inc V-head)	2,500 lbs	1,135 kg	15 x 13 x 16"	381 x 330.2 x 406.4 mm	16 - 26"	406.4 - 660.4 mm	14.00 lbs	6.50 kg

**NOTE: The 3900 and 4100 (our most popular stands) are stocked in higher quantities at more global locations.**

**For head options on the Low Profile Pipe Jacks, please see the Fixed and Folding Pipe Jacks head options**



## EASY AND SAFE FOR HIGH PIPE WORKING APPLICATIONS



The B&B Six-foot folding pipe jack is ideal for pipe holding and leveling in high places. With a top height of 72" / 1,829 mm tall and a bottom adjustment of 39" / 991 mm, the Six-foot jack can be used for many applications.

The Six-foot jack is foldable and can be carried with ease, fitting into tight spaces when transporting. The height adjustment is performed with a locking tube and 1½" (1.5") ACME adjustment.



## SPECIFICATIONS

- Height adjustment: 39 - 72" / 991 - 1,829 mm
- Load capacity: 1,000 lbs / 450 kg
- Extra wide 38" footprint increases stability.
- Lock washer can be fastened to base for safety.
- 1½" (1.5") ACME-thread adjustment.
- Folding design allows easy access into tight work spaces.
- Bottom T-handle locks folding base into fixed position.
- Pipe diameter: 1 - 12"

PART NO.		90060 / * 90061
DESCRIPTION:		Steel wheel heads (slip on style) (pair) / Stainless steel wheel heads (slip on style) (pair)
LOAD CAPACITY		
1,000 lbs	450 kg	
SHIPPING WEIGHT		
7.30 lbs	3.30 kg	



PART NO.		* 90032
DESCRIPTION:		Phenolic wheel heads (slip on style) (pair)
LOAD CAPACITY		
1,000 lbs	450 kg	
SHIPPING WEIGHT		
4.40 lbs	2.00 kg	



PART NO.		* 90000
DESCRIPTION:		Stainless steel ball transfer heads (slip on style) (pair)
LOAD CAPACITY		
1,000 lbs	450 kg	
SHIPPING WEIGHT		
5.50 lbs	2.50 kg	



PART NO.	DESCRIPTION	LOAD CAPACITY		FOOTPRINT		ADJUSTMENT HEIGHT		SHIPPING WEIGHT	
3610	Six foot folding pipe jack with V-head	1,000 lbs	450 kg	38 x 38"	965.2 - 965.2 mm	39 - 72"	991 - 1,829 mm	44.10 lbs	20.00 kg



The B&B Adjustable Pipe Roller is used in pipe fabrication facilities and job-sites with thousands in use. The sturdy base and adjustable wheels are a favorite with medium size pipe fabrication projects allowing a stable work platform that allows pipe rotation.

*B&B Adjustable 4 leg pipe roller stand just got better!  
After 30 years being the industry standard we have an upgraded and improved design, based on user feedback.*

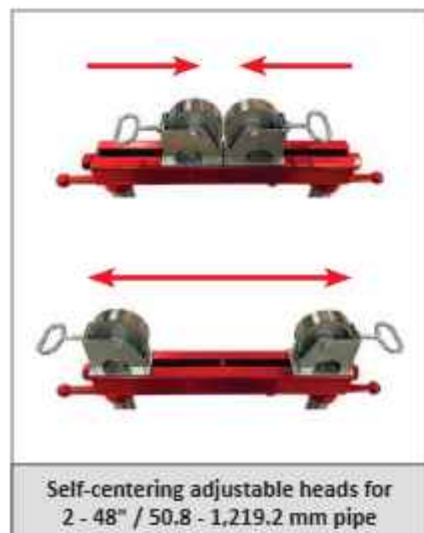
## SPECIFICATIONS

- Stable 4 leg design with a 24 x 32" / 609.6 - 812.8 mm footprint.
- Removable wheel housings for ease of shipment and replacement.
- Self-centering head adjustment from either side
- T-handle brake to stop pipe rotation.
- Wheels can be easily adjusted to accommodate pipe up to 36".
- 1.5" wide wheels to reduce instances of 'pipe travel'.
- Widest in the industry.



## NEW AND IMPROVED


- **110% increased load capacity (heaviest duty in the industry).** 5,290 lbs / 2,400 kg load capacity (with steel wheels).
- Oversized square tube legs and braces for increased durability. 1 x 1.5" (largest in the industry).
- Square tube bracing offers additional strength and rigidity (heaviest duty box section in the industry).
- Folding leg design for easy storage and strength.
- User friendly.
- Increased footprint for additional stability.





	PART NO.	DESCRIPTION				LOAD CAPACITY	
	4300	Adjustable 4 leg pipe roller with steel wheels (pair)				5,290 lbs	2,400 kg
	DIMENSIONS (L x W x H)		ADJUSTMENT HEIGHT		SHIPPING WEIGHT		
	32 x 24 x 32"	812.8 x 609.6 x 812.8 mm	32"	812.8 mm	47 lbs	21.00 kg	

	PART NO.	DESCRIPTION				LOAD CAPACITY	
	4315	Adjustable pipe roller with stainless steel wheels (pair)				5,290 lbs	2,400 kg
	DIMENSIONS (L x W x H)		ADJUSTMENT HEIGHT		SHIPPING WEIGHT		
	32 x 24 x 32"	812.8 x 609.6 x 812.8 mm	32"	812.8 mm	47 lbs	21.00 kg	

	PART NO.	DESCRIPTION				LOAD CAPACITY	
	4305	Adjustable pipe roller with phenolic wheels (pair)				1,000 lbs	450 kg
	DIMENSIONS (L x W x H)		ADJUSTMENT HEIGHT		SHIPPING WEIGHT		
	32 x 24 x 32"	812.8 x 609.6 x 812.8 mm	32"	812.8 mm	43 lbs	19.00 kg	

	PART NO.	DESCRIPTION				LOAD CAPACITY	
	4310	Adjustable pipe roller with stainless steel ball transfer (pair)				3,200 lbs	1,450 kg
	DIMENSIONS (L x W x H)		ADJUSTMENT HEIGHT		SHIPPING WEIGHT		
	32 x 24 x 32"	812.8 x 609.6 x 812.8 mm	32"	812.8 mm	44 lbs	20.00 kg	



PART NO.	90065
DESCRIPTION:	Quick change steel wheel heads (pair)
	
LOAD CAPACITY	5,290 lbs / 2,400 kg
SHIPPING WEIGHT	6.60 lbs / 3.00 kg

PART NO.	* 90066
DESCRIPTION:	Quick change stainless steel wheel heads (pair)
	
LOAD CAPACITY	5,290 lbs / 2,400 kg
SHIPPING WEIGHT	6.60 lbs / 3.00 kg

PART NO.	* 90067
DESCRIPTION:	Quick change phenolic wheel heads (pair)
	
LOAD CAPACITY	1,000 lbs / 450 kg
SHIPPING WEIGHT	4.90 lbs / 2.20 kg

PART NO.	* 90068
DESCRIPTION:	Quick change stainless steel ball transfer heads (pair)
	
LOAD CAPACITY	3,200 lbs / 1,450 kg
SHIPPING WEIGHT	6.60 lbs / 3.00 kg

\* SUITABLE FOR STAINLESS STEEL



*Heavy duty four leg height adjustable, pin lock pipe stands*

The B&B Duo pipe stand accommodates pipes up to 48" / 1,219.2 mm, is height adjustable and equipped with quick change style heads.

The Duo pipe stand has locking brakes on the wheels to secure the load for marking, layout or fit-up and is supplied with folding legs as standard for ease of use and transport and has an ultra safe pin locking design.



Various height holes enable the operator to fix the stand at the required working height using the safety locking pins

**FEATURES AND ADVANTAGES**

- 75% increased load capacity (heaviest duty in the industry). 5,290 lbs / 2,400 kg load capacity (with steel wheels).
- Oversized square tube legs and braces for increased durability. 1 x 1.5" (largest in the industry).
- Folding legs for ease of transport and storage
- Self-centering head adjustment from either side
- Height adjustable 29 - 42.5" / 736.6 - 1,079.5 mm
- 2 - 48" / 50.8 - 1,219.2 mm pipe diameter capacity
- Quick height adjustment with additional fine thread for workpiece levelling
- 'Trued' wheels eliminate 'corkscrewing' of pipe during rotation
- Lockable wheels to hold pipe in position
- Safety pins to lock stand at working height



The Duo pipe stand utilises a fine adjustment thread. This allows precise adjustment of the working height and can compensate for uneven surfaces to ensure the pipe is level at all times.

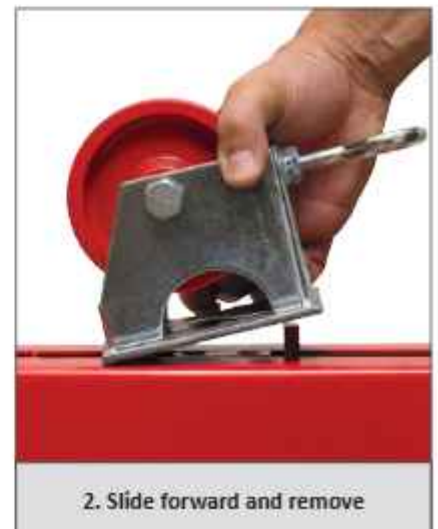
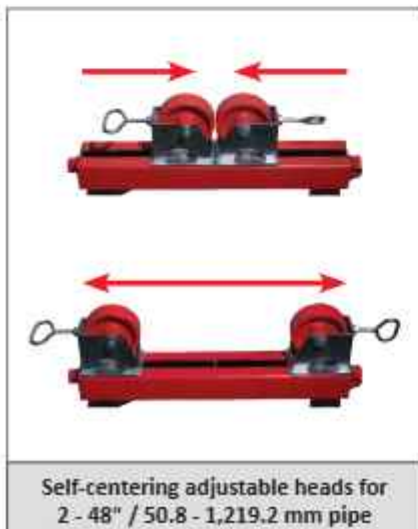
The unique safety locking pins allow the Duo pipe stand to be fixed at various working heights. Final adjustment and levelling can then be made with the fine adjustment handle.




## SIMPLE HEAD CHANGEOVER

The quick change style heads increase the versatility of the Duo pipe stand. The heads can be changed without tools in a matter of seconds to adapt to almost all applications.

Roller wheels are available in steel, stainless steel or phenolic version. Ball transfer heads are available in steel or stainless steel.





PART NO.		90039		
DESCRIPTION: Duo pipe stand (base unit only)				
LOAD CAPACITY		SHIPPING WEIGHT		
5,290 lbs	2,400 kg	46.30 lbs	21.00 kg	


PART NO.		90065 / * 90066		 90065                      * 90066	
DESCRIPTION: Quick change steel wheel heads (pair) / Quick change stainless steel wheel heads (pair)					
LOAD CAPACITY			SHIPPING WEIGHT		
5,290 lbs		2,400 kg		9.40 lbs                      4.25 kg	

PART NO.	* 90067		
DESCRIPTION: Quick change phenolic wheel heads (pair)			
LOAD CAPACITY		SHIPPING WEIGHT	
1,000 lbs	450 kg	4.90 lbs	2.20 kg


PART NO.		* 90068			
DESCRIPTION: Quick change stainless steel ball transfer heads (pair)					
LOAD CAPACITY			SHIPPING WEIGHT		
3,200 lbs		1,450 kg		6.60 lbs	
				3.00 kg	

\* SUITABLE FOR STAINLESS STEEL



	PART NO.	DESCRIPTION				LOAD CAPACITY	
	4375	Duo Pipe Stand with steel wheels (pair)				5,290 lbs	2,400 kg
	DIMENSIONS (L x W x H)		ADJUSTMENT HEIGHT		SHIPPING WEIGHT		
	32 x 24 x 29"	82.8 x 609.6 x 736.6 mm	29 - 42.5"	736.6 - 1,079.5 mm	56 lbs	25.00 kg	

	PART NO.	DESCRIPTION				LOAD CAPACITY	
	4390	Duo Pipe Stand with stainless steel wheels (pair)				5,290 lbs	2,400 kg
	DIMENSIONS (L x W x H)		ADJUSTMENT HEIGHT		SHIPPING WEIGHT		
	32 x 24 x 29"	82.8 x 609.6 x 736.6 mm	29 - 42.5"	736.6 - 1,079.5 mm	56 lbs	25.00 kg	

	PART NO.	DESCRIPTION				LOAD CAPACITY	
	4380	Duo Pipe Stand with phenolic wheels (pair)				1,000 lbs	450 kg
	DIMENSIONS (L x W x H)		ADJUSTMENT HEIGHT		SHIPPING WEIGHT		
	32 x 24 x 29"	82.8 x 609.6 x 736.6 mm	29 - 42.5"	736.6 - 1,079.5 mm	51 lbs	23.00 kg	

	PART NO.	DESCRIPTION				LOAD CAPACITY	
	4385	Duo Pipe Stand with stainless steel ball transfer (pair)				3,200 lbs	1,450 kg
	DIMENSIONS (L x W x H)		ADJUSTMENT HEIGHT		SHIPPING WEIGHT		
	32 x 24 x 29"	82.8 x 609.6 x 736.6 mm	29 - 42.5"	736.6 - 1,079.5 mm	53 lbs	24.00 kg	



## RAPID, SELF CENTERING PIPE TRESTLES

\* SUITABLE FOR STAINLESS STEEL

This quick change roller stand is the top part of the popular duo pipe stand and is suitable to be floor or bench mounted. Available with 2 adjustable head styles to suit pipes from 2 - 48" / 50.8 - 1,219.2 mm.

PART NO.	90063
DESCRIPTION: Quick change roller (base unit only)	
LOAD CAPACITY	SHIPPING WEIGHT
5,290 lbs	2,400 kg
13.00 lbs	5.90 kg

PART NO.	90065 / * 90066
DESCRIPTION: Quick change steel wheel heads (pair) / Quick change stainless steel wheel heads (pair)	 
LOAD CAPACITY	SHIPPING WEIGHT
5,290 lbs	2,400 kg
9.40 lbs	4.25 kg

PART NO.	* 90067
DESCRIPTION: Quick change phenolic wheel heads (pair)	
LOAD CAPACITY	SHIPPING WEIGHT
1,000 lbs	450 kg
4.90 lbs	2.20 kg

PART NO.	* 90068
DESCRIPTION: Quick change stainless steel ball transfer heads (pair)	
LOAD CAPACITY	SHIPPING WEIGHT
3,200 lbs	1,450 kg
6.60 lbs	3.00 kg

# TRI-STAND CHAIN VICE & PIPE CHAIN VICE CLAMP

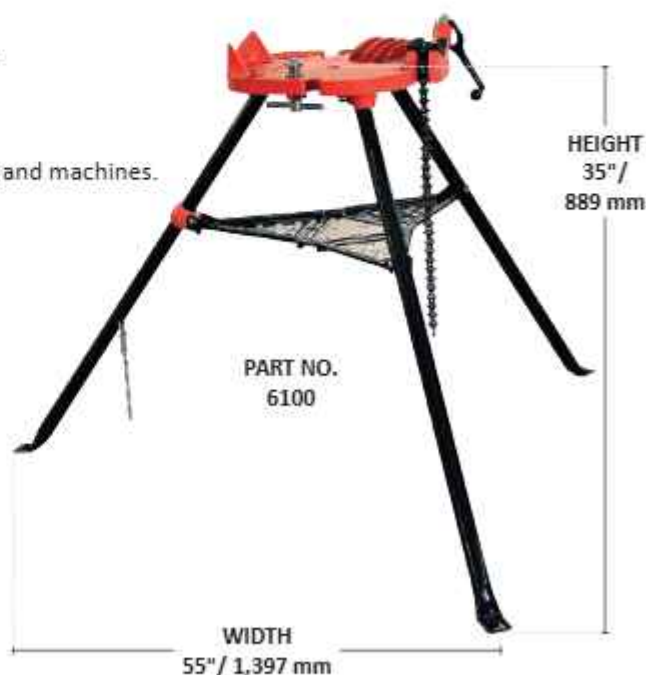


The B&B Tri-stand chain vice is a proven design used on construction sites around the globe.

## SPECIFICATIONS

- Durable cast aluminium head balances light weight and durability.
- Heavy duty hold down tightening device with replaceable jaw.
- Folding legs with chain lock.
- Leg bracing doubles as a lipped shelf for holding additional tooling and machines.
- Up to 6" pipe capacity
- Boxed and fully assembled, ready for immediate use (box dimensions: 46 x 18 x 16" / 1,168.4 x 457.2 x 406.4 mm)
- Heavy duty jaws
- 55" width x 35" height / 1,397 x 889 mm (working dimensions)
- 1,000 lbs / 450 kg capacity

PART NO.  
90041



PART NO.	DESCRIPTION	LOAD CAPACITY	SHIPPING WEIGHT
6100	Tri-stand chain vice - up to 6" pipe diameter capacity	1,000 lbs 450 kg	49.00 lbs 22.00 kg
90041	Pipe chain vice clamp - up to 6" pipe diameter capacity	1,000 lbs 450 kg	11.00 lbs 5.00 kg



The B&B 3 Leg Giant Jack offers the same pipe diameter capacity of 36" and same capacity ratings as the 5 Leg Giant Jack, but is used in a static position.

The solid 1 1/4" (1.75") ACME rod height adjustment sets the B&B Giant Jack apart from our competitor's hollow ACME-threads, along with increased leg tube dimensions.

Multiple wheel options including steel, stainless steel and rubber are ideal for a variety of applications.

## SPECIFICATIONS

- Rated at 5,000 lbs / 2,265 kg capacity with no wheels and 2,500 lbs / 1,135 kg with steel wheels
- Operating height 33 - 44" / 838.2 - 1,117.6 mm
- Available with steel, stainless steel or rubber wheels
- 32" / 812.8 mm wide stance increases stability
- Recommended for up to 36" / 914 mm pipe
- Increased leg wall thickness and increased tube dimension adds greater strength for bigger pipe fabrication
- Solid 1 1/4" (1.75") ACME rod comes standard with all B&B giant jacks
- Nylon washer allows smooth raising and lowering of the V-head



PART NO.	3501		
DESCRIPTION: Three leg giant jack (jack only)			
LOAD CAPACITY		SHIPPING WEIGHT	
5,000 lbs	2,265 kg	64.00 lbs	29.00 kg

Hold down chain device 3506 locks pipe to jack



PART NO.	3512		
DESCRIPTION: Giant 3 package ST (jack and steel wheels)			
LOAD CAPACITY		SHIPPING WEIGHT	
2,500 lbs	1,135 kg	70.00 lbs	32.00 kg

PART NO.	3513		
DESCRIPTION: Giant 3 package RU (jack and rubber wheels)			
LOAD CAPACITY		SHIPPING WEIGHT	
1,000 lbs	450 kg	65.00 lbs	30.00 kg

PART NO.		* 3509		 V-head not included
DESCRIPTION: Ball transfer stainless steel (pair)				
LOAD CAPACITY		SHIPPING WEIGHT		
1,000 lbs	450 kg	6.60 lbs	3.00 kg	

PART NO.		* 3507		 V-head not included	
DESCRIPTION: Stainless steel sleeves (pair)					
LOAD CAPACITY				SHIPPING WEIGHT	
5,000 lbs		2,265 kg		2.20 lbs 1.00 kg	



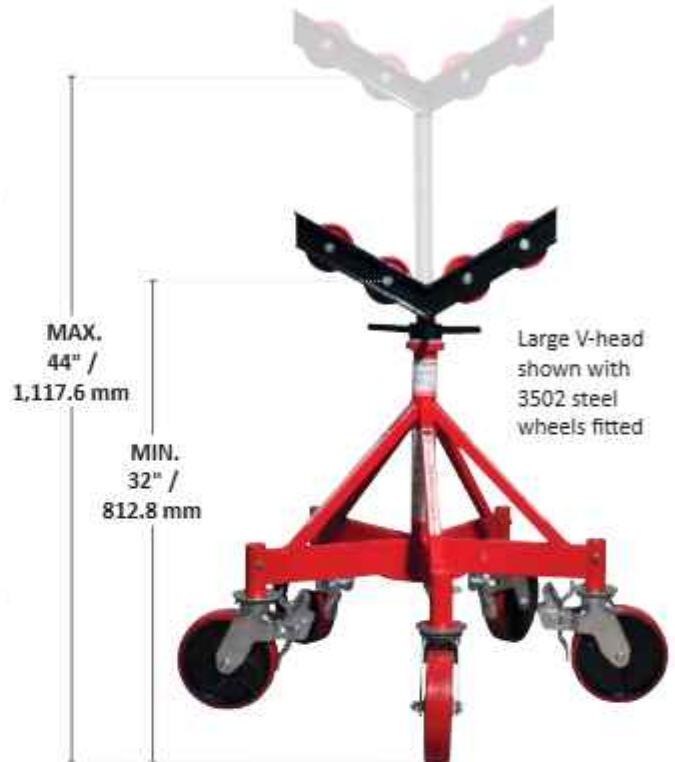
The B&B 5 Leg giant jack is ideal for large diameter pipes (up to 36") and its V-head can be equipped with multiple options.

The 5 Leg giant jack can be fitted with caster wheels, allowing pipe movement.

The 5 Leg giant jack is characterised by its increased steel dimensions throughout, including 1 3/4" (1.75") solid ACME rod, making it the toughest on the market.

## SPECIFICATIONS

- Urethane over steel casters with solid hub increase safety and durability
- 5,000 lbs / 2,265 kg capacity without wheels and casters
- 2,500 lbs / 1,135 kg capacity with steel wheels and urethane casters
- Operating height with swivel casters: 32 - 44" / 812.8 - 1,117.6 mm
- Operating height with jack only: 24 - 36" / 609.6 - 914.4 mm
- Minimum - maximum pipe diameter 1 - 36" / 25.4 - 914.4 mm
- Solid 1 3/4" (1.75") ACME-thread adjustment
- 1.5" wide steel / phenolic wheels to reduce instances of "pipe travel"
- Can be purchased as a complete kit as shown: jack, casters, and wheels
- Turning wheels available in steel, stainless steel, and phenolic
- Multiple add-ons available, including stainless steel sleeves for contamination free fit-up, recommended hold down chain device for transport, ball transfer attachments for variation of pipe movement and more



Transport pipes around the site or workshop with ease.



Shown with 3504 caster wheel kit fitted and 3506 hold down chain device



Hold down chain device 3506 locks pipe to jack



Levelling pads - optional PART NO. 3500-1



\* SUITABLE FOR STAINLESS STEEL

PART NO.	3500		
DESCRIPTION: 5 Leg Giant Jack (base and V-head)			
LOAD CAPACITY		SHIPPING WEIGHT	
5,000 lbs	2,265 kg	64.00 lbs	29.00 kg

5 Leg giant base can be fitted with levelling pads or caster roller wheels kit set

PART NO.		3500-1			
DESCRIPTION: Levelling pads for 3500 (set of 5)					
LOAD CAPACITY				SHIPPING WEIGHT	
5,000 lbs		2,265 kg		5 lbs - 2.5 kg	

PART NO.	3504		
DESCRIPTION: Caster roller wheel kit for Part No. 3500 (5 casters)			
LOAD CAPACITY		SHIPPING WEIGHT	
2,500 lbs	1,135 kg	37.5 lbs	17.00 kg

## 5 LEG GIANT V-HEAD OPTIONS:

PART NO.		3502		 V-head not included	
DESCRIPTION: Steel wheel kit (4 wheels) - 1 1/2" wide wheels					
LOAD CAPACITY				SHIPPING WEIGHT	
2,500 lbs		1,135 kg		12.30 lbs	
				5.60 kg	

PART NO.	* 3508	 V-head not included	
DESCRIPTION: Stainless steel wheel kit (4 wheels) - 1 1/2" wide wheels			
LOAD CAPACITY		SHIPPING WEIGHT	
2,500 lbs.	1,135 kg	12.30 lbs	5.60 kg

PART NO.	* 3503	 V-head not included	
DESCRIPTION: Phenolic wheel kit (4 wheels) - 1 1/2" wide wheels			
LOAD CAPACITY		SHIPPING WEIGHT	
1,000 lbs	450 kg	4.40 lbs	2.00 kg

PART NO.	* 3509		
DESCRIPTION: Ball transfer stainless steel (pair)			
LOAD CAPACITY		SHIPPING WEIGHT	
1,000 lbs	450 kg	6.60 lbs	3.00 kg

PART NO.	3507	 V-head not included	
DESCRIPTION: Stainless steel sleeves (pair)			
LOAD CAPACITY		SHIPPING WEIGHT	
5,000 lbs	2,265 kg	2.20 lbs	1.00 kg


PART NO.	3506		
DESCRIPTION: Hold down chain device			
LOAD CAPACITY		SHIPPING WEIGHT	
n/a	n/a	15.40 lbs	7.00 kg



\* SUITABLE FOR STAINLESS STEEL

	PART NO.	DESCRIPTION		LOAD CAPACITY	
	3510	5 Leg Giant Jack with steel wheels and casters		2,500 lbs	1,135 kg
	DIMENSIONS (L x W x H)		ADJUSTMENT HEIGHT	SHIPPING WEIGHT	
	30 x 30 x 32"	762 x 762 x 812.8 mm	32 - 44"	812.8 - 1,117.6 mm	114 lbs 52.00 kg

	PART NO.	DESCRIPTION		LOAD CAPACITY	
	3514	5 Leg Giant Jack with stainless steel wheels and casters		2,500 lbs	1,135 kg
	DIMENSIONS (L x W x H)		ADJUSTMENT HEIGHT	SHIPPING WEIGHT	
	30 x 30 x 32"	762 x 762 x 812.8 mm	32 - 44"	812.8 - 1,117.6 mm	114 lbs 52.00 kg

	PART NO.	DESCRIPTION		LOAD CAPACITY	
	3511	5 Leg Giant Jack with phenolic wheels and casters		1,000 lbs	450 kg
	DIMENSIONS (L x W x H)		ADJUSTMENT HEIGHT	SHIPPING WEIGHT	
	30 x 30 x 32"	762 x 762 x 812.8 mm	32 - 44"	812.8 - 1,117.6 mm	106 lbs 48.00 kg

	PART NO.	DESCRIPTION		LOAD CAPACITY	
	3518	5 Leg Giant Jack with stainless steel ball transfer and casters		1,000 lbs	450 kg
	DIMENSIONS (L x W x H)		ADJUSTMENT HEIGHT	SHIPPING WEIGHT	
	30 x 30 x 32"	762 x 762 x 812.8 mm	32 - 44"	812.8 - 1,117.6 mm	108 lbs 49.00 kg



# MEGA ROLLERS & STANDS



**Pipe &  
Industrial  
Tools™**

AN  GROUP BRAND

[www.BBPIPETOOLS.COM](http://www.BBPIPETOOLS.COM)



The B&B mega roller (6,000 lbs / 2,721 kg) is a high capacity pipe roller designed for heavy duty job-site use.

Its oversized 6 x 3" wheels have a urethane over steel design, offering numerous advantages: they allow ultra smooth pipe rotation via heavy duty sealed bearings, for both steel, stainless steel and exotic alloys pipe. The unique head design also allows the removal of the wheels, transforming to a V-head stand restricting pipe rotation.

The robust construction, with its twin solid ACME rods, allows to raise and lower the headstock and wheels for precise fit-ups even under load.

All mega rollers are powder coated, have quick release axle pins, and are modular allowing additional feed wheels and casters for mega movement.



## SPECIFICATIONS

- Load capacity: 6,000 lbs / 2,720 kg
- Pipe capacity: 4 - 48" / 101.6 - 1,219.2 mm
- Working height: 31 - 48" / 787.4 - 1,219.2 mm
- 6 x 3" heavy duty urethane over steel wheels with sealed bearings for smooth pipe rotation
- Contamination free wheels are ideal for steel and exotic pipe fabrication
- Heavy gauge steel construction throughout. These mega rollers are made for years of job-site abuse
- Powder coated safety red for high visibility
- Expanded foot print at 36 x 32" / 914.4 x 812.8 mm increases pipe stability



PART NO.	DESCRIPTION	LOAD CAPACITY		PIPE CAPACITY		ADJUSTMENT HEIGHT		SHIPPING WEIGHT	
3806	Mega Roller Short 6,000 lbs	6,000 lbs	2,720 kg	4 - 48"	101.6 - 1,219.2 mm	27 - 34"	685.8 - 863.6 mm	118.00 lbs	54.00 kg
3807	Mega Roller Tall 6,000 lbs	6,000 lbs	2,720 kg	4 - 48"	101.6 - 1,219.2 mm	31 - 48"	787.4 - 1,219.2 mm	105.80 lbs	48.00 kg



The B&B mega roller (10,000 lbs / 4,535 kg) is a high capacity pipe roller designed for heavy duty job-site use.

Its oversized 10 x 3" / 250 - 75 mm wheels have an urethane over steel design, offering numerous advantages: they allow ultra smooth pipe rotation via heavy duty sealed bearings, for both steel, stainless steel and exotic alloys pipe. The unique head design also allows the removal of the wheels, transforming to a V-head stand restricting pipe rotation.

The robust construction, with its twin solid ACME rods, allows to raise and lower the headstock and wheels for precise fit-ups even under load.

All mega rollers are powder coated, have quick release axle pins, and are modular allowing additional feed wheels and casters for mega movement.



## SPECIFICATIONS

- Load capacity: 10,000 lbs / 4,535 kg
- Pipe capacity: 4 - 60" / 101.6 - 1,524 mm
- Working height: 25 - 35" / 609.6 - 889 mm
- 10 x 3" heavy duty urethane over steel wheels with sealed bearings for smooth pipe rotation.
- Contamination free wheels are ideal for steel and exotic pipe fabrication.
- Heavy gauge steel construction throughout. These mega rollers are made for years of job-site abuse.
- Powder coated safety red for high visibility.
- Expanded foot print at 36 x 52" / 914.4 x 1,320.8 mm increases pipe stability.
- Four side fork lift access.



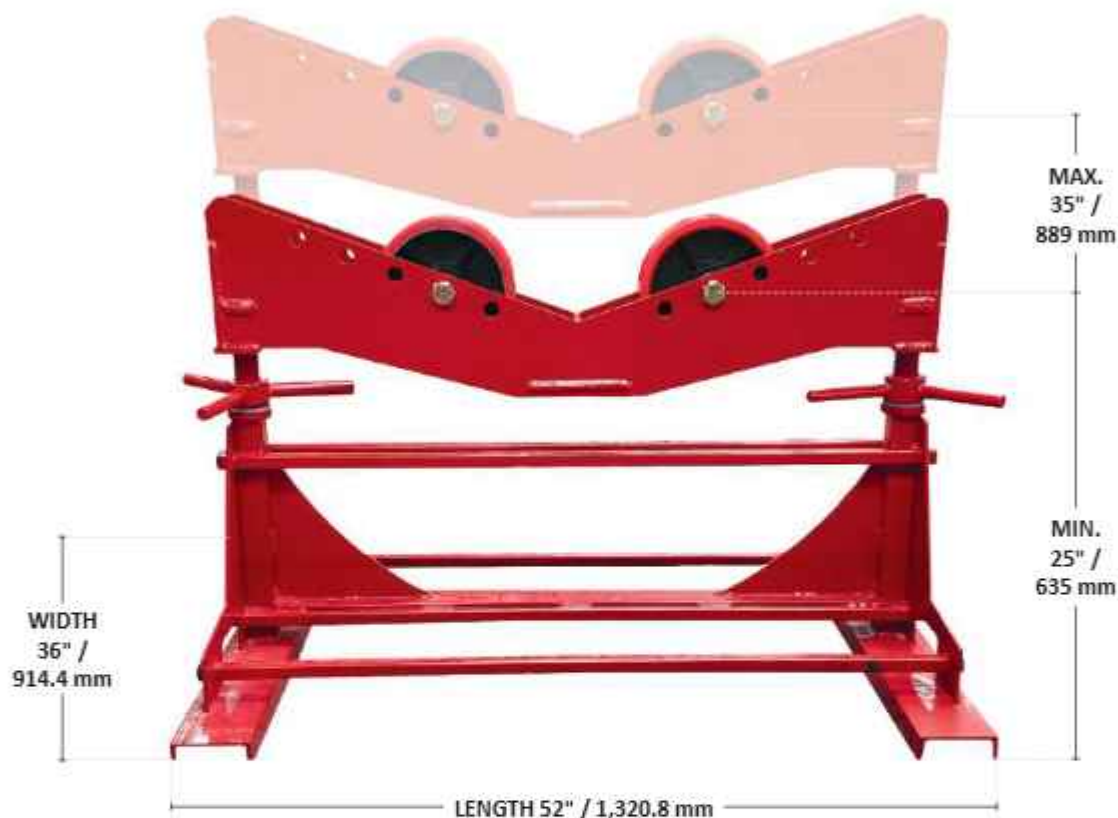
PART NO.	DESCRIPTION	LOAD CAPACITY		PIPE CAPACITY		ADJUSTMENT HEIGHT		SHIPPING WEIGHT	
3802	Mega Roller 10,000 lbs	10,000 lbs	4,535 kg	4 - 60"	101.6 - 1,524 mm	25 - 35"	609.6 - 889 mm	264.60 lbs	120.00 kg



The B&B mega roller (15,000 lbs / 6,800 kg) is a high capacity pipe roller designed for heavy duty job-site use. This mega roller is built on the same platform as the 10,000 lbs / 4,535 kg roller, but has an increased headstock width and two additional wheels added. Its oversized 10 x 3" / 250 - 75 mm wheels have an urethane over steel design, offering numerous advantages: they allow ultra smooth pipe rotation via heavy duty sealed bearings, for both steel, stainless steel and exotic alloys pipe. The unique head design also allows the removal of the wheels, transforming to a V-head stand restricting pipe rotation.

The robust construction, with its twin solid ACME rods, allows to raise and lower the headstock and wheels for precise fit-ups even under load.

All mega rollers are powder coated, have quick release axle pins, and are modular allowing additional feed wheels and casters for mega movement.



## SPECIFICATIONS

- Load capacity: 15,000 lbs / 6,800 kg
- Pipe capacity: 4 - 60" / 101.6 - 152.4 mm
- Working height: 25 - 35" / 635 - 889 mm
- Four 10 x 3" heavy duty urethane over steel wheels with sealed bearings for smooth pipe rotation.
- Contamination free wheels are ideal for steel and exotic pipe fabrication.
- Heavy gauge steel construction throughout. These mega rollers are made for years of job-site abuse.
- Powder coated safety red for high visibility.
- Expanded foot print at 36 x 52" / 914.4 x 1,320.8 mm increases pipe stability.
- Four side fork lift access.



PART NO.	DESCRIPTION	LOAD CAPACITY		PIPE CAPACITY		ADJUSTMENT HEIGHT		SHIPPING WEIGHT	
3808	Mega Roller 15,000 lbs	15,000 lbs	6,800 kg	4 - 60"	101.6 - 152.4 mm	25 - 35"	635 - 889 mm	349.90 lbs	158.70 kg



The 3 Leg B&B Mega Jacks offer a wider and safer stance offering increased stability.

All Mega Jacks offer a large 16" V-head with reinforced V-gussets for added strength, increasing the load capacity to 5,000 lbs

Height adjustment is 1 $\frac{1}{4}$ " (1.75") solid ACME-thread and the elimination of the adjustment washer, inside tube and T-handle simplify use and reduce instances of potential operator error.



## SPECIFICATIONS

- Double reinforced V-head
- Increased V-head dimensions allows for up to 32" pipe diameters
- Over-sized legs and braces for increased capacity
- Third party tested with over a 3:1 safety ratio
- Increased footprint for additional stability
- Machined ACME nut with tri-handle increases durability and adjustment ability
- 5,000 lbs load capacity!
- Heavy-duty 1 $\frac{1}{4}$ " (1.75") solid ACME rod adjustment



PART NO.	DESCRIPTION	LOAD CAPACITY		ADJUSTMENT HEIGHT		SHIPPING WEIGHT	
3600	Mega Jack - 3 Leg	5,000 lbs	2,300 kg	32 - 44"	812.8 x 1,117.6 mm	40.00 lbs	18.00 kg



The 4 Leg B&B Mega Jacks offer a wider and safer stance offering increased stability.

All Mega Jacks offer a large 16" V-head with reinforced V-gussets for added strength, increasing the load capacity to 5,000 lbs!

Height adjustment is 1 $\frac{3}{4}$ " (1.75") solid ACME-thread and the elimination of the adjustment washer, inside tube and T-handle simplify use and reduce instances of potential operator error.



## SPECIFICATIONS

- Double reinforced V-head
- Increased V-head dimensions allows for up to 32" pipe diameters
- Over-sized legs and braces for increased capacity
- Third party tested with over a 3:1 safety ratio
- Increased footprint for additional stability
- Machined ACME nut with tri-handle increases durability and adjustment ability
- 5,000 lbs load capacity!
- Heavy-duty 1 $\frac{3}{4}$ " (1.75") solid ACME rod adjustment



PART NO.	DESCRIPTION	LOAD CAPACITY		ADJUSTMENT HEIGHT		SHIPPING WEIGHT	
3604	Mega Jack - 4 Leg	5,000 lbs	2,300 kg	31 - 49"	787.4 - 1,244.6 mm	42.00 lbs	19.00 kg



**NEW DESIGN**

The B&B Mega Horse is ideal for storing flats and rounds. Robust construction allows years of use and abuse in an engineered and tested design.

Powder coating and clear capacity rated labeling makes this a long lasting and safe solid steel sawhorse.

**SPECIFICATIONS**

- A-frame leg design bracing from center of beam to legs for three point support
- 1.5 x 3" / 40 - 80 mm leg box section
- I-beam top 5 x 3" / 120 x 75 mm
- Third party load capacity tested

**NEW AND IMPROVED**

- Oversized square tube legs and braces for increased durability 1.5 x 3" / 40 - 80 mm (largest in the industry)
- Square tube bracing offers additional strength and rigidity (heaviest duty box section in the industry)
- Bolt together design for easy storage and strength
- User friendly
- Increased footprint for additional stability
- Improved I-beam top 5 x 3" / 120 x 75 mm



PART NO.	DESCRIPTION	LOAD CAPACITY		DIMENSIONS (L x W x H)		ADJUSTMENT HEIGHT	SHIPPING WEIGHT	
3820	Mega Horse	12,000 lbs	5,445 kg	60 x 37 x 36"	152.4 x 939.8 x 914.4 mm	Fixed	172.00 lbs	78.00 kg





## Pipe welding clamp 1 - 14" o/d



This classic design high-low alignment clamp has been in use worldwide for years.

With a durable, yet cost effective fabricated design, the PDQ pipe clamps fit up to 14" pipe and are available in three sizes.

### Working on stainless steel?

The new Quick-Fit PDQ pipe clamps can be used on stainless steel without any additional accessories due to the stainless steel feet and balls in the wing-nuts, preventing contamination of the pipe.

### SPECIFICATIONS

- Available in three sizes for 1 - 14" / 25 - 370 mm pipe fit-up.
- Durable ACME-thread design used for years in the field.
- Lightweight design is great for overhead work.
- With stainless steel contact points standard, the PDQ clamp is ready for exotic pipe fabrication out of the box.
- Great for most types of fit-ups. Pipe to pipe, pipe to elbow and pipe to flange amongst others.
- The most cost effective yet durable high-low fit-up clamp on the market.

## QUICK FIT PDQ SIZING AND SPECIFICATION

NEW PART NO	DESCRIPTION	RANGE O/D		WEIGHT	
* 1220	Quick-Fit PDQ Pipe Clamp 1 - 3"	1 - 3"	25 - 90 mm	4 lbs	1.80 kg
* 1221	Quick-Fit PDQ Pipe Clamp 2 - 6"	2 - 6"	50 - 170 mm	11 lbs	5.00 kg
* 1222	Quick-Fit PDQ Pipe Clamp 6 - 14"	6 - 14"	165 - 370 mm	18 lbs	8.20 kg

*\* Suitable for stainless steel*

## QUICK FIT PDQ TYPICAL APPLICATIONS



**WARNING:** These PDQ clamps cannot be used as a lifting device, as this may result in damage or injury



## Pipe welding clamp 1 - 14" o/d



This classic design high-low alignment clamp has been in use worldwide for years. The heavy-duty design utilises forged steel, galvanised to offer protection to ensure a robust product.

With a durable, yet cost effective fabricated design, the E-Z Fit Gold pipe clamps fit up to 14" pipe and are available in five overlapping sizes.

### SPECIFICATIONS

- Available in five sizes for 1 - 14" / 25 - 370 mm pipe fit-up.
- Heavy-duty design: forged steel, galvanised.
- Great for most types of fit-ups. Pipe to pipe, pipe to elbow and pipe to flange amongst others.
- The most heavy-duty high-low fit-up clamp on the market.

### OPTIONAL EXTRAS

Stainless steel covers can be fitted quickly to the clamping feet.

This makes all contact points of the clamp stainless, thus eliminating contamination of the pipe.



### E-Z FIT GOLD SIZING AND SPECIFICATION

PART NO.	DESCRIPTION	RANGE O/D		WEIGHT	
EZG3	E-Z Fit Gold Pipe Clamp 1 - 3"	1 - 3"	20 - 90 mm	3 lbs	1.40 kg
EZG5	E-Z Fit Gold Pipe Clamp 2 - 5"	2 - 5"	50 - 150 mm	7 lbs	3.00 kg
EZG7	E-Z Fit Gold Pipe Clamp 3 - 7"	3 - 7"	90 - 195 mm	7.5 lbs	3.30 kg
EZG9	E-Z Fit Gold Pipe Clamp 5 - 9"	5 - 9"	125 - 245 mm	15.5 lbs	7.00 kg
EZG14	E-Z Fit Gold Pipe Clamp 9 - 14"	9 - 14"	225 - 370 mm	20 lbs	9.00 kg

### STAINLESS STEEL COVERS AND SCREWS ONLY

PART NO.	PIPE CLAMP SIZE
* EZG3SS	1 - 3" (20 - 90 mm)
* EZG5/7SS	2 - 5" / 3 - 7" (50 - 195 mm)
* EZG9/14SS	5 - 9" / 9 - 14" (125 - 370 mm)
<i>* Suitable for stainless steel</i>	

### E-Z FIT GOLD TYPICAL APPLICATIONS



**WARNING:** These E-Z Gold pipe clamps cannot be used as a lifting device, as this may result in damage or injury



## Specialist pipe welding alignment clamps for steel or stainless steel

### SPIDER CLAMP - SERIES 400

This model has two independent expanding clamps, allowing independent alignment of two hollow cylindrical components of different diameters. The bottom expanding clamp is inserted and clamped in the pipe by means of the knob. Then the other part (e.g. a flange) is placed over the top expanding clamp and clamped by means of the hand-bar. This model is specially suited for heavy parts. All locating rails are in stainless steel.



PART NO	CLAMPING RANGE I/D		WEIGHT	
* 400-1 SS	2 - 6"	54 - 140 mm	3.31 lbs	1.50 kg
* 400-2 SS	4 - 8"	85 - 220 mm	9.15 lbs	4.15 kg
* 400-3 SS	6 - 14"	120 - 350 mm	26.01 lbs	11.80 kg
* 400-4 SS	8 - 20"	180 - 520 mm	65 lbs	30.00 kg
* 400-5 SS	16 - 36"	400 - 940 mm	145 lbs	65.00 kg

*\* Suitable for stainless steel*

### ELBOW SPIDER CLAMP - SERIES 500

This model with two independent clamps is used for clamping flanges of all kinds and similar parts to elbows and pipe-bends of various diameters.

The lower expanding clamp has strong gripping feet which insert into the bend and are tightened by means of the knob. The top expanding clamp is tightened by means of the handbar in the flange.



PART NO	CLAMPING RANGE I/D		WEIGHT	
* 500-1 SS	2 - 4"	54 - 115 mm	2.53 lbs	1.15 kg
* 500-2 SS	4 - 7"	85 - 195 mm	7.05 lbs	3.20 kg
* 500-3 SS	6 - 12"	120 - 315 mm	21.16 lbs	9.60 kg

*\* Suitable for stainless steel*

### SCISSOR CLAMP - SERIES 100

For quick and accurate alignment of pipes of equal or differing diameters on a common centre line.

Automatic diameter compensation. There's no need to make additional adjustments.

All parts stay easily accessible for welding.



PART NO	CLAMPING RANGE O/D		WEIGHT	
* 100-1 SS	1/4 - 3"	10 - 70 mm	4.85 lbs	2.20 kg
* 100-2 SS	1.5 - 5"	40 - 140 mm	11.90 lbs	5.40 kg
* 100-3 SS	2.5 - 12"	75 - 330 mm	55 lbs	25.00 kg

*\* Suitable for stainless steel*



The Fit-Up Pro D206 centering head is a precision tool, useful for finding pipe centerlines, establishing angles or points around pipes, shafts, tanks or other cylindrical surfaces. The rotating protractor dial is marked in 2.5° increments for precise point location. The centering head is designed for use on cylindrical surfaces from 3 to 40" in diameter.

This product comes in blister packaging.



### FEATURES AND ADVANTAGES

- **True** - Precisely locates top dead center
- **Easy** - Simple and quick to use
- **Versatile** - Use to find points on shafts, tanks, or pipe

PART NO	DESCRIPTION	SHIPPING WEIGHT		SHIPPING DIMENSIONS	
D206	Magnetized pipe centering finder with punch and multi-tool	3 lbs	1.35 kg	8 x 8"	200 x 200 mm

\* Imperial measurement



The robust aluminium construction, rotating dial and magnetized base makes this tool a handy must-have for all tradesmen. This product comes in blister packaging.



### FEATURES AND ADVANTAGES

- 2 x 2.5" / 50 x 63.5 mm - small and convenient
- Rotating dial allows for easy angle verification
- Magnetized for hands-free use
- Sturdy and durable for years of use

PART NO	DESCRIPTION	SHIPPING WEIGHT		SHIPPING DIMENSIONS	
D208	Magnetized pocket level and inclinometer (2 x 2.5" / 50 x 63.5 mm)	1 lbs	0.45 kg	4 x 4"	100 x 100 mm

The perfect environment for welding is paramount to maintaining the corrosion resistant properties when welding stainless steel, titanium and other corrosion resistant materials.

If the correct processes are not adhered to during the welding process, the weld seam is subjected to heat and air, which can cause oxidation. For the best results, oxidation must be prevented.

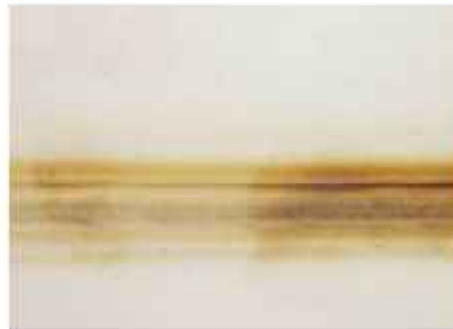
The quality of the exotic corrosion resistant material welding is dependent on the correct purging methods to minimize or eliminate oxidation.

All PPM (Pipe Purge Masters) purging systems are designed to efficiently remove oxygen as fast as possible. This can be achieved by isolating a small area of the pipe, resulting in the fastest purge times, while also minimising the amount of purge gas used.

The below pictures show the different levels of weld quality depending on oxidation present at the point of welding.



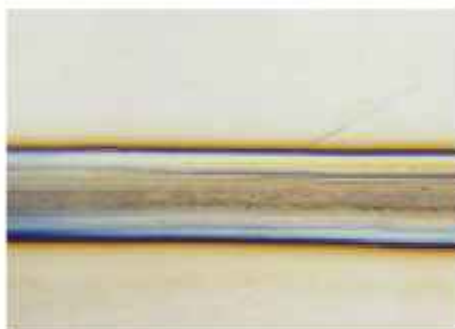
Argon purge 12 ppm  
Vol. O<sub>2</sub> content



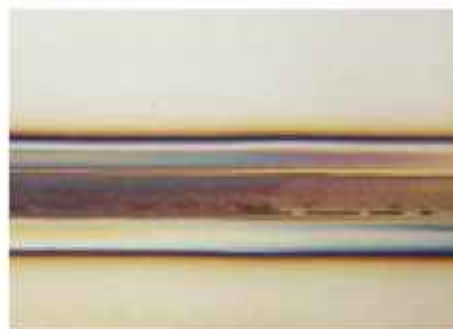
Argon purge 60 ppm  
Vol. O<sub>2</sub> content



Argon purge 70 ppm  
Vol. O<sub>2</sub> content



Argon purge 200 ppm  
Vol. O<sub>2</sub> content



Argon purge 250 ppm  
Vol. O<sub>2</sub> content



Argon purge 500 ppm  
Vol. O<sub>2</sub> content

## WELD QUALITY

The effective welding of stainless steel, titanium and other exotic materials for the nuclear, petrochemical, pharmaceutical, semiconductor, aerospace and food industries requires the proper tools to create a perfect weld environment.

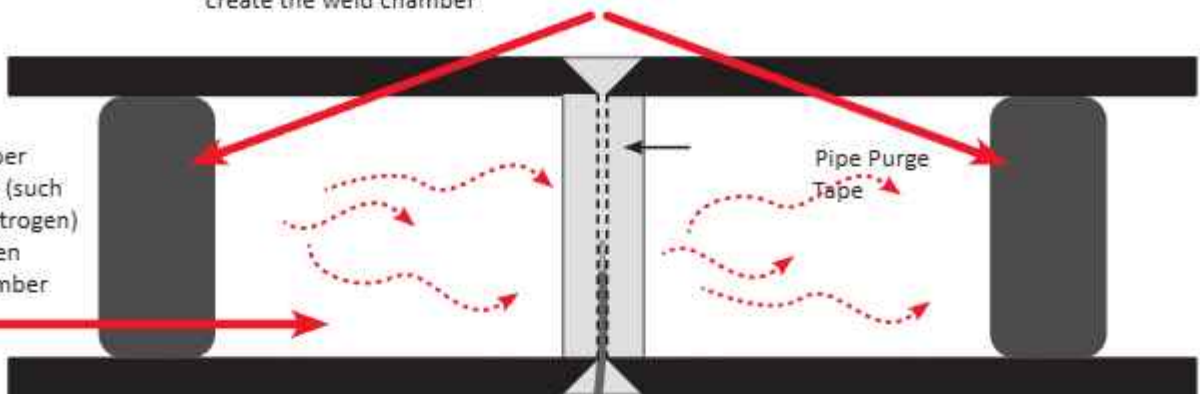
Purging equipment and its use have a major impact on preventing oxidation and improving the final weld quality. The basic principles of purging can be seen below.

PPM supplies a comprehensive range of systems to create the correct welding environment, whatever the application.

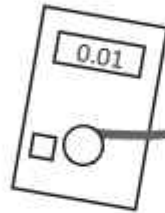
## PRINCIPLES OF PURGING

1. Create a seal (dam) either side of the weld and close off the weld gap with purge tape to create the weld chamber.

2. Fill the chamber with inert gas (such as argon or nitrogen) to expel oxygen from the chamber



3. Use a weld purge monitor to indicate when the required level of oxygen has been met



4. Welding can then be performed, guaranteeing no oxidation or discoloration of the weld





Sizes: 2 - 24" / 50 - 610 mm

### Double inflatable pipe weld purging systems

Used for 90% of the traditional pipe weld purging applications to provide bright, shiny, oxide free weld roots. The PPM Purge Bag system is quick and easy to use, providing a very rapid weld purge. High quality materials are used in the production of these systems, guaranteeing perfect oxide-free weld roots in very little time.

4" Purge Bag system



**HEAT  
RESISTANT  
70°C /  
158°F**



The gas release valve is pre-set and sealed, so it requires no adjustment



A luminous strip allows the operator to locate and centre the Purge Bag system to the weld gap with ease

Due to the design of this system, the volume of gas used to purge is minimized, resulting in significant reduction of both time and inert gas consumption. Return on investment can be achieved in as little as just one or two welds. These robust systems can be used over and over again paying for themselves in very little time.

### FEATURES AND ADVANTAGES

- PPM's Purge Bag system dramatically reduces purging times, leading to significant savings
- **Typical purge times for 4" pipe = 1½ mins; 8" pipe = 4 mins; 12" pipe = 8 mins**
- Ready to use, connects to a dedicated and regulated gas supply. Choose any flow rate up to 20l a min.
- Gas pressure control ensures an even positive root bead with no notching
- Quick and easy to install, simplifying the process of inert gas purging
- Heat resistant up to 70°C (158°F) continuously
- Use less inert gas. The volume of purge gas used is less than 2% of a conventional purge

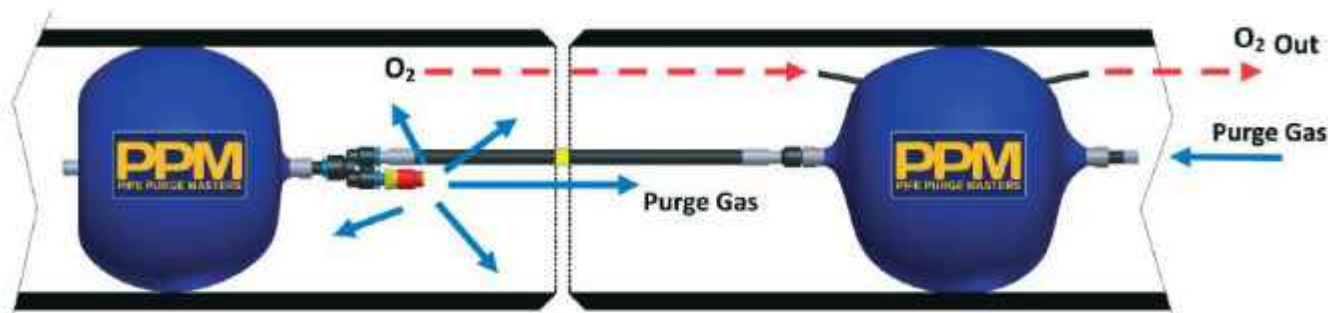


## HOW IT WORKS

The Purge Bag system is designed around the principle of using 2 dams, that are connected by an armoured spinal tube, to create a seal on either side of the weld. These dams are just far enough away from the weld not to be affected by heat, but close enough to the joint to provide the fastest weld purge time.

Once ready to start purging, the system is inserted into the bore of the pipe using the luminous strip to centre the system to the weld gap.

When the gas flow is started, the dams inflate and upon reaching the pre-set pressure, the valve releases the gas gently into the weld chamber to purge the interspace without turbulence. The oxygen is removed from the weld chamber by the inert gas through the integral exhaust tubes in the bags, enabling the welder to produce an even oxidation free penetration weld bead. Used in conjunction with PPM's oxygen monitors, indicating when the required low level of oxygen has been reached, welding can then commence. Afterwards, the dams are deflated simply by disconnecting the purge gas feed and the system easily withdrawn. The design of this system requires only one gas connection for both dam inflation and weld purging.



## SIZING AND SPECIFICATION

PART NO.	DESCRIPTION	NOMINAL PIPE SIZE		INTERNAL DIAMETER RANGE (I/D)		WEIGHT (LBS / KG)	
PB02	2" Purge Bag system	2"	50 mm	1.49 - 2.37"	38 - 60 mm	1 lbs	0.34 kg
PB03	3" Purge Bag system	3"	75 mm	2.17 - 3.53"	55 - 90 mm	1 lbs	0.34 kg
PB04	4" Purge Bag system	4"	100 mm	3.51 - 4.51"	89 - 115 mm	1 lbs	0.34 kg
PB05	5" Purge Bag system	5"	125 mm	4.14 - 5.50"	105 - 140 mm	1 lbs	0.38 kg
PB06	6" Purge Bag system	6"	150 mm	5.32 - 6.68"	135 - 170 mm	1 lbs	0.38 kg
PB07	7" Purge Bag system	7"	175 mm	6.30 - 7.66"	160 - 195 mm	2 lbs	0.70 kg
PB08	8" Purge Bag system	8"	200 mm	7.09 - 8.45"	180 - 215 mm	2 lbs	0.90 kg
PB09	9" Purge Bag system	9"	225 mm	8.08 - 9.43"	205 - 240 mm	2 lbs	0.95 kg
PB10	10" Purge Bag system	10"	250 mm	9.26 - 10.61"	235 - 270 mm	2 lbs	1.00 kg
PB11	11" Purge Bag system	11"	275 mm	10.03 - 11.41"	255 - 290 mm	2 lbs	1.05 kg
PB12	12" Purge Bag system	12"	300 mm	11.03 - 12.39"	280 - 315 mm	2 lbs	1.10 kg
We strongly recommend using our Rapid Purge™ system over 12"							
PB13	13" Purge Bag system	13"	325 mm	11.41 - 12.79"	290 - 325 mm	2 lbs	1.20 kg
PB14	14" Purge Bag system	14"	350 mm	12.41 - 13.76"	315 - 350 mm	3 lbs	1.30 kg
PB15	15" Purge Bag system	15"	375 mm	13.38 - 14.76"	340 - 375 mm	3 lbs	1.50 kg
PB16	16" Purge Bag system	16"	400 mm	14.38 - 15.73"	365 - 400 mm	3 lbs	1.70 kg
PB17	17" Purge Bag system	17"	425 mm	15.35 - 16.73"	390 - 425 mm	4 lbs	1.75 kg
PB18	18" Purge Bag system	18"	450 mm	16.34 - 17.70"	415 - 450 mm	4 lbs	1.80 kg
PB19	19" Purge Bag system	19"	475 mm	17.32 - 18.70"	440 - 475 mm	4 lbs	1.85 kg
PB20	20" Purge Bag system	20"	500 mm	18.31 - 19.67"	465 - 500 mm	4 lbs	1.90 kg
PB22	22" Purge Bag system	22"	550 mm	19.69 - 21.05"	500 - 535 mm	5 lbs	2.20 kg
PB24	24" Purge Bag system	24"	600 mm	22.45 - 23.80"	570 - 605 mm	6 lbs	2.50 kg
Larger sizes and custom solutions available upon request with 35 mm / 1.37" expansion range							

The Purge Bag comes with fittings:  
International = 21 KA series male connector  
Americas = 1/4" (0.25") NPT male connector



**Sizes: 8 - 80" / 190 - 2,044 mm**

**Purge larger diameter pipes faster than ever!**

Used for stainless, duplex, chrome steels, titanium, nickel and other alloy materials, the PPM Rapid Purge™ system enables high speed welding of larger diameter pipe joints that need to be purged.

The system is designed to enable the user to produce high quality, reliable and repeatable welding of stainless steel tube and pipe joints free from oxidation and discolouration. A 36" diameter pipe will purge to below 0.1% oxygen in less than 10 minutes and all smaller pipes correspondingly faster.

Due to the quality of the materials used, the Rapid Purge™ system can be used over and over again, reducing manufacturing costs. The Rapid Purge™ system has been developed specifically to enable high speed purging for any pipe welding application.



**HEAT  
RESISTANT  
250°C /  
482°F**

## FEATURES AND ADVANTAGES

- Dramatic savings of time, gas and money can be made by using these systems.
- **Typical purge times of less than 10 minutes!**
- The unique thru-bore design of the central sleeve minimizes the area to be purged, dramatically reducing the gas consumption
- Friction free coatings allow easy movement through pipes from one joint to another, even around bends and elbows
- Ready to use, connects to a dedicated and regulated gas supply. Choose any flow rate up to 80 l/min through the twin pre-set purge valve
- A central luminous strip allows fast and accurate alignment of the system to the center-point of the weld area
- The inflatable dams and umbilical hose are covered with a heat resistant material and insulated accordingly for use at temperatures up to 250°C (482°F)

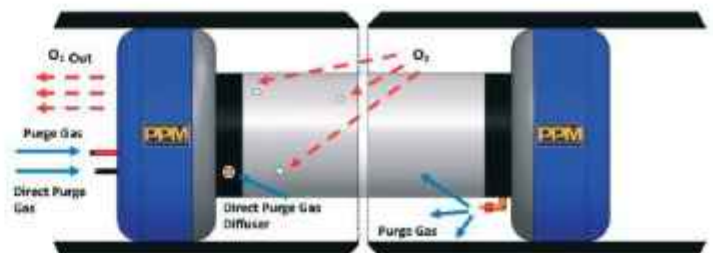
## HOW IT WORKS

The Rapid Purge™ system for pipe and vessel purging comprises a tandem inflatable dam system connected by an umbilical hose and collar to reduce the volume being purged.

A gas exhaust valve is installed between the primary and secondary dam, along with an auxiliary argon purge line. This Rapid Purge™ system valve is pre-set, making it ready to use 'straight out of the box'.

Each Rapid Purge™ system is covered with heat protective material, so that the higher temperatures closer to the weld do not damage the system.

The robust design of the Rapid Purge™ system allows for many years of repeatable trouble free use.



## RAPID PURGE SYSTEM SIZING AND SPECIFICATION

PART NO.	DESCRIPTION	NOMINAL PIPE SIZE		INTERNAL DIAMETER RANGE (I/D)		WEIGHT (LBS / KG)	
RP08	8" Rapid Purge system	8"	200 mm	7.09 - 8.45"	180 - 215 mm	3 lbs	1.40 kg
RP10	10" Rapid Purge system	10"	250 mm	9.26 - 10.61"	235 - 270 mm	3 lbs	1.70 kg
RP12	12" Rapid Purge system	12"	300 mm	11.03 - 12.39"	280 - 315 mm	4 lbs	2.10 kg
RP14	14" Rapid Purge system	14"	350 mm	12.41 - 13.76"	315 - 350 mm	5 lbs	2.50 kg
RP16	16" Rapid Purge system	16"	400 mm	14.38 - 15.73"	365 - 400 mm	5 lbs	2.70 kg
RP18	18" Rapid Purge system	18"	450 mm	16.34 - 17.70"	415 - 450 mm	6 lbs	3.00 kg
RP20	20" Rapid Purge system	20"	500 mm	18.31 - 19.67"	465 - 500 mm	7 lbs	3.40 kg
RP22	22" Rapid Purge system	22"	550 mm	19.69 - 21.05"	500 - 535 mm	7 lbs	3.60 kg
RP24	24" Rapid Purge system	24"	600 mm	22.45 - 23.80"	570 - 605 mm	8 lbs	3.80 kg
RP26	26" Rapid Purge system	26"	650 mm	24.41 - 25.77"	620 - 655 mm	9 lbs	4.50 kg
RP28	28" Rapid Purge system	28"	700 mm	26.38 - 27.74"	670 - 705 mm	12 lbs	5.50 kg
RP30	30" Rapid Purge system	30"	750 mm	28.35 - 29.71"	720 - 755 mm	13 lbs	6.00 kg
RP32	32" Rapid Purge system	32"	800 mm	30.32 - 31.68"	770 - 805 mm	18 lbs	8.00 kg
RP34	34" Rapid Purge system	34"	850 mm	32.48 - 33.86"	825 - 860 mm	19 lbs	8.50 kg
RP36	36" Rapid Purge system	36"	900 mm	34.45 - 35.81"	875 - 910 mm	20 lbs	9.10 kg
RP38	38" Rapid Purge system	38"	950 mm	36.61 - 37.99"	930 - 965 mm	21 lbs	9.50 kg
RP40	40" Rapid Purge system	40"	1,000 mm	38.98 - 39.95"	990 - 1015 mm	22 lbs	9.90 kg
RP42	42" Rapid Purge system	42"	1,050 mm	40.56 - 41.91"	1,030 - 1,065 mm	29 lbs	13.20 kg
RP44	44" Rapid Purge system	44"	1,100 mm	42.52 - 43.90"	1,080 - 1,115 mm	30 lbs	13.70 kg
RP46	46" Rapid Purge system	46"	1,150 mm	44.29 - 45.67"	1,125 - 1,160 mm	32 lbs	14.50 kg
RP48	48" Rapid Purge system	48"	1,200 mm	46.46 - 47.82"	1,180 - 1,215 mm	33 lbs	15.00 kg
RP50	50" Rapid Purge system	50"	1,250 mm	48.42 - 49.80"	1,230 - 1,265 mm	35 lbs	16.00 kg
RP52	52" Rapid Purge system	52"	1,300 mm	50.59 - 51.97"	1,285 - 1,320 mm	37 lbs	17.00 kg
RP54	54" Rapid Purge system	54"	1,350 mm	52.36 - 53.74"	1,330 - 1,365 mm	39 lbs	18.00 kg
RP60	60" Rapid Purge system	60"	1,500 mm	58.46 - 59.84"	1,485 - 1,520 mm	44 lbs	20.00 kg
RP66	66" Rapid Purge system	66"	1,650 mm	64.38 - 65.73"	1,635 - 1,670 mm	55 lbs	25.00 kg
RP72	72" Rapid Purge system	72"	1,800 mm	70.27 - 71.65"	1,785 - 1,820 mm	62 lbs	28.00 kg
RP80	80" Rapid Purge system	80"	2,000 mm	78.35 - 79.72"	1,990 - 2,025 mm	66 lbs	30.00 kg

Larger sizes and custom solutions available upon request with 35 mm / 1.37" expansion range

The Rapid Purge Bag comes with fittings:  
International = 21 KA series male connector  
Americas = 1" (0.25") NPT male connector





**Sizes: 3 - 80" / 63 - 2,044 mm**

## Systems for the fast purging of high temperature pipework

The PPM Purge Bag and Rapid Purge™ systems are both available in a heat resistant version. They are designed to be used when high temperatures will be encountered during the process of pipe welding; such as pre-heated pipework, and pipes where very high temperatures are required for welding.

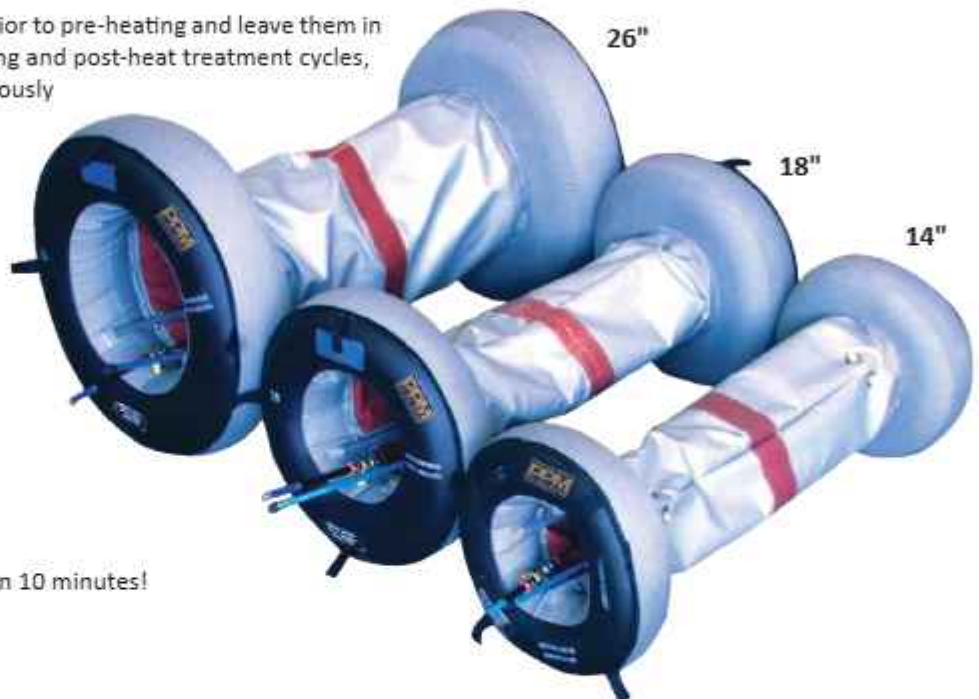
These versions of the inflatable pipe purging systems are heat resistant up to 350°C (662°F) for up to 24 hours, or up to 500°C (932°F) for short periods of time. The heat resistant systems are available for all pipe diameters from 3 - 80" / 63 - 2,035 mm.

Mirroring the features of the standard range of inflatable purging systems, the heat resistant range comes with a central luminous band for rapid centering of the system to the weld root.

The welder can position these systems prior to pre-heating and leave them in place throughout the pre-heating, welding and post-heat treatment cycles, allowing the weld to be purged continuously for up to 24 hours if necessary.



**Heat Resistant Rapid Purge**  
e.g. 36" pipe will purge in less than 10 minutes!

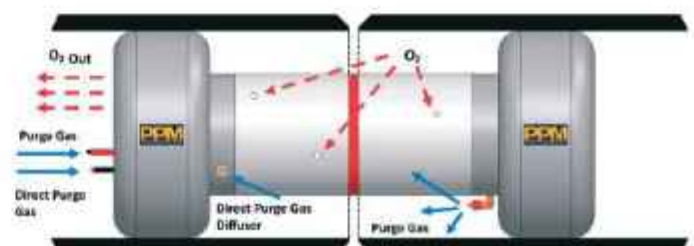


## FEATURES AND ADVANTAGES

- Heat resistant up to 350°C (662°F) for up to 24 hours, or up to 500°C (932°F) for short periods
- Available for all pipe diameters from 3 to 80" / 63 to 2,044 mm
- Designed to be flexible, for ease of insertion, use and withdrawal from pipes, bends, elbows etc.
- Suitable for 24 hour cycles including pre-heat, welding and post-weld heat treatment
- A central luminous strip allows fast and accurate alignment of the system to the center-point of the weld area
- Manufactured to nuclear quality standards with nuclear approved materials, these systems guarantee bright, shiny, coke and oxide-free welds
- Designed and manufactured specifically for the power industry where high strength chrome alloy steels are more frequently used
- Ready to use, connects to a dedicated and regulated gas supply. Choose any flow rate (purge bags - up to 20l/min/Rapid Purge™ up to 80l/min) through the twin pre-set purge valve

## HOW IT WORKS

Both the heat resistant Purge Bag system and the heat resistant Rapid Purge™ system work identically to the standard systems, but are made of a purposely designed Nomex and Kevlar mix material to withstand the temperatures typically encountered when welding exotic materials.



## PURGE BAG HEAT RESISTANT SIZING AND SPECIFICATION

PART NO.	DESCRIPTION	NOMINAL PIPE SIZE		INTERNAL DIAMETER RANGE (I/D)		WEIGHT (LBS / KG)	
PB02/HR	2" Purge Bag - Heat Resistant to 500 degrees	2"	50 mm	1.49 - 2.37"	38 - 60 mm	1 lbs	0.40 kg
PB03/HR	3" Purge Bag - Heat Resistant to 500 degrees	3"	75 mm	2.17 - 3.53"	55 - 90 mm	1 lbs	0.50 kg
PB04/HR	4" Purge Bag - Heat Resistant to 500 degrees	4"	100 mm	3.51 - 4.51"	89 - 115 mm	1 lbs	0.60 kg
PB05/HR	5" Purge Bag - Heat Resistant to 500 degrees	5"	125 mm	4.14 - 5.50"	105 - 140 mm	1 lbs	0.70 kg
PB06/HR	6" Purge Bag - Heat Resistant to 500 degrees	6"	150 mm	5.32 - 6.68"	135 - 170 mm	2 lbs	0.90 kg
PB07/HR	7" Purge Bag - Heat Resistant to 500 degrees	7"	175 mm	6.30 - 7.66"	160 - 195 mm	2 lbs	1.20 kg

Larger sizes and custom solutions available upon request with 35 mm / 1.37" expansion range



PB06/HR

e.g. 6" pipe will purge in less than 4 minutes!

## RAPID PURGE™ HEAT RESISTANT SIZING AND SPECIFICATION

PART NO.	DESCRIPTION	NOMINAL PIPE SIZE		INTERNAL DIAMETER RANGE (I/D)		WEIGHT (LBS / KG)	
RP08/HR	8" Rapid Purge - Heat Resistant up to 500 degrees	8"	200 mm	7.09 - 8.45"	180 - 215 mm	3 lbs	1.40 kg
RP10/HR	10" Rapid Purge - Heat Resistant up to 500 degrees	10"	250 mm	9.26 - 10.61"	235 - 270 mm	3 lbs	1.70 kg
RP12/HR	12" Rapid Purge - Heat Resistant up to 500 degrees	12"	300 mm	11.03 - 12.39"	280 - 315 mm	4 lbs	2.10 kg
RP14/HR	14" Rapid Purge - Heat Resistant up to 500 degrees	14"	350 mm	12.41 - 13.76"	315 - 350 mm	5 lbs	2.50 kg
RP16/HR	16" Rapid Purge - Heat Resistant up to 500 degrees	16"	400 mm	14.38 - 15.73"	365 - 400 mm	5 lbs	2.70 kg
RP18/HR	18" Rapid Purge - Heat Resistant up to 500 degrees	18"	450 mm	16.34 - 17.70"	415 - 450 mm	6 lbs	3.00 kg
RP20/HR	20" Rapid Purge - Heat Resistant up to 500 degrees	20"	500 mm	18.31 - 19.67"	465 - 500 mm	7 lbs	3.40 kg
RP22/HR	22" Rapid Purge - Heat Resistant up to 500 degrees	22"	550 mm	19.69 - 21.05"	500 - 535 mm	7 lbs	3.60 kg
RP24/HR	24" Rapid Purge - Heat Resistant up to 500 degrees	24"	600 mm	22.45 - 23.80"	570 - 605 mm	8 lbs	3.80 kg
RP26/HR	26" Rapid Purge - Heat Resistant up to 500 degrees	26"	650 mm	24.41 - 25.77"	620 - 655 mm	9 lbs	4.50 kg
RP28/HR	28" Rapid Purge - Heat Resistant up to 500 degrees	28"	700 mm	26.38 - 27.74"	670 - 705 mm	12 lbs	5.50 kg
RP30/HR	30" Rapid Purge - Heat Resistant up to 500 degrees	30"	750 mm	28.35 - 29.71"	720 - 755 mm	13 lbs	6.00 kg
RP32/HR	32" Rapid Purge - Heat Resistant up to 500 degrees	32"	800 mm	30.32 - 31.68"	770 - 805 mm	18 lbs	8.00 kg
RP34/HR	34" Rapid Purge - Heat Resistant up to 500 degrees	34"	850 mm	32.48 - 33.86"	825 - 860 mm	19 lbs	8.50 kg
RP36/HR	36" Rapid Purge - Heat Resistant up to 500 degrees	36"	900 mm	34.45 - 35.81"	875 - 910 mm	20 lbs	9.10 kg
RP38/HR	38" Rapid Purge - Heat Resistant up to 500 degrees	38"	950 mm	36.61 - 37.99"	930 - 965 mm	21 lbs	9.50 kg
RP40/HR	40" Rapid Purge - Heat Resistant up to 500 degrees	40"	1,000 mm	38.98 - 39.95"	990 - 1015 mm	22 lbs	9.90 kg
RP42/HR	42" Rapid Purge - Heat Resistant up to 500 degrees	42"	1,050 mm	40.56 - 41.91"	1,030 - 1,065 mm	29 lbs	13.20 kg
RP44/HR	44" Rapid Purge - Heat Resistant up to 500 degrees	44"	1,100 mm	42.52 - 43.90"	1,080 - 1,115 mm	30 lbs	13.70 kg
RP46/HR	46" Rapid Purge - Heat Resistant up to 500 degrees	46"	1,150 mm	44.29 - 45.67"	1,125 - 1,160 mm	32 lbs	14.50 kg
RP48/HR	48" Rapid Purge - Heat Resistant up to 500 degrees	48"	1,200 mm	46.46 - 47.82"	1,180 - 1,215 mm	33 lbs	15.00 kg
RP50/HR	50" Rapid Purge - Heat Resistant up to 500 degrees	50"	1,250 mm	48.42 - 49.80"	1,230 - 1,265 mm	35 lbs	16.00 kg
RP52/HR	52" Rapid Purge - Heat Resistant up to 500 degrees	52"	1,300 mm	50.59 - 51.97"	1,285 - 1,320 mm	37 lbs	17.00 kg
RP54/HR	54" Rapid Purge - Heat Resistant up to 500 degrees	54"	1,350 mm	52.36 - 53.74"	1,330 - 1,365 mm	39 lbs	18.00 kg
RP60/HR	60" Rapid Purge - Heat Resistant up to 500 degrees	60"	1,500 mm	58.46 - 59.84"	1,485 - 1,520 mm	44 lbs	20.00 kg
RP72/HR	72" Rapid Purge - Heat Resistant up to 500 degrees	72"	1,800 mm	70.27 - 71.65"	1,785 - 1,820 mm	62 lbs	28.00 kg
RP80/HR	80" Rapid Purge - Heat Resistant up to 500 degrees	80"	2,000 mm	78.35 - 79.72"	1,990 - 2,025 mm	66 lbs	30.00 kg

Larger sizes and custom solutions available upon request with 35 mm / 1.37" expansion range

The Heat Resistant Purge Bag comes with fittings:  
International = 21 KA series male connector  
Americas = 1/4" (0.25") NPT male connector



**Sizes: 3/4" - 12" / 16 - 320 mm**

### Purge pipes fast with minimal gas usage

PPM also manufactures the silicone Double Seal purging system that has been designed to further reduce both inert gas use and purging time. This system uses silicon discs to form an airtight seal, reducing purge times and gas usage for maximum efficiency.

There are 2 styles of silicon Double Seal systems available:

- the Gas Finger system is designed for small pipes and tubes from 3/4" - 1.5" / 16 - 38 mm
- the Double Seal system is made for pipes from 3/4" - 12" / 16 - 320 mm

### FEATURES AND ADVANTAGES

- Extremely short purge times resulting in valuable cost savings
- Typical purge times of less than 2 minutes (e.g. an 8" pipe will purge to below 0.01% oxygen in less than 2 minutes)
- High quality silicon sealing discs that prevent them tilting or falling over inside the pipe
- Guaranteed gas tight seal
- UV and temperature resistant up to 330°C (626°F) continuously or 450°C (842°F) for short periods
- Suitable for purging pipes, elbows and fittings
- The silicon seal units can be separated and used as a gas finger and pipe stopper respectively
- Fully interchangeable and individually exchangeable system, reducing cost of ownership



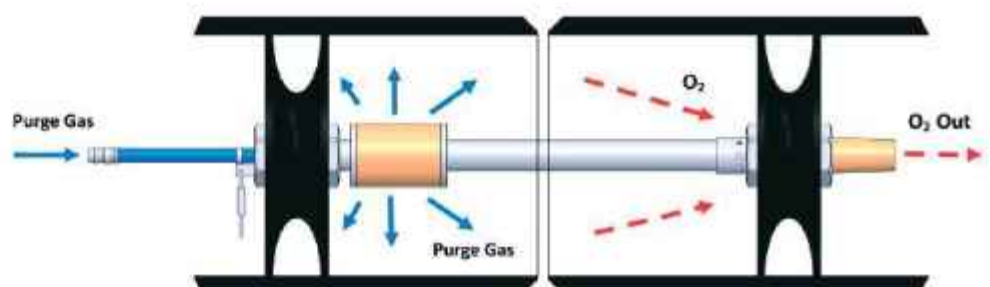
Available as a kit in 3 sizes:  
DSK16-165 (16 - 165 mm i/d)  
DSK16-220 (16 - 220 mm i/d)  
DSK16-320\* (16 - 320 mm i/d)  
**\* contains two cases**

### HOW IT WORKS

The gas inlet and outlet are provided with twin sealing discs separated by a flexible, rigid or a spring-type tube. The design guarantees that at least one disc will always remain tight to the pipe wall creating a 100% seal. The discs are UV and temperature-resistant up to 330°C (626°F) continuously or up to 450°C (842°F) for short periods. The gas is diffused into the chamber via the built-in sintered diffuser and exits through the exhaust holes in the secondary twin disc unit.

This extremely short process of gas diffusion provides an equal gas flow and prevents any gas turbulence behind the weld, thereby minimising the risk of oxygen re-entering the welding chamber.

Besides the very short purging time, the double seal system also offers the possibility to cover various nominal pipe diameters by one pair of seals enabling highly economic use of the device. The double seal system can be purchased individually or in kit form for a range of pipe diameters.



## DOUBLE SEAL KITS SIZING AND SPECIFICATION - RECOMMENDED

PART NO.	DESCRIPTION	PIPE I/D RANGE		WEIGHT (LBS / KG)		CONNECTOR LENGTH
DSK16-165	Double Seal Kit - complete kit 16 - 165 mm i/d	0.62 - 6.49"	16 - 165 mm	24 lbs	11.00 kg	Variable - check kit list
DSK16-220	Double Seal Kit - complete kit 16 - 220 mm i/d	0.62 - 8.66"	16 - 220 mm	33 lbs	15.00 kg	Variable - check kit list
DSK16-320	Double Seal Kit - complete kit 16 - 320 mm i/d	0.62 - 12.59"	16 - 320 mm	42 lbs	19.00 kg	Variable - check kit list

## DOUBLE SEAL GAS FINGERS SIZING AND SPECIFICATION

PART NO.	DESCRIPTION	PIPE I/D RANGE		WEIGHT (LBS / KG)		CONNECTOR LENGTH
DSF16-19	Double Seal Gas Finger 16 - 19 mm i/d	0.62 - 0.74"	16 - 19 mm	0.5 lbs	0.20 kg	n/a
DSF19-24	Double Seal Gas Finger 19 - 24 mm i/d	0.74 - 0.94"	19 - 24 mm	0.5 lbs	0.20 kg	n/a
DSF24-29	Double Seal Gas Finger 24 - 29 mm i/d	0.94 - 1.14"	24 - 29 mm	0.5 lbs	0.20 kg	n/a
DSF29-34	Double Seal Gas Finger 29 - 34 mm i/d	1.14 - 1.33"	29 - 34 mm	0.6 lbs	0.30 kg	n/a
DSF34-38	Double Seal Gas Finger 34 - 38 mm i/d	1.33 - 1.49"	34 - 38 mm	0.6 lbs	0.30 kg	n/a

## DOUBLE SEAL PURGE SYSTEM SIZING AND SPECIFICATION

PART NO.	DESCRIPTION	PIPE I/D RANGE		WEIGHT (LBS / KG)		CONNECTOR LENGTH
DS16-19	Double Seal purge system - Flexible 16 - 19 mm i/d	0.62 - 0.74"	16 - 19 mm	1.5 lbs	0.65 kg	3.94" / 100 mm
DS19-24	Double Seal purge system - Flexible 19 - 24 mm i/d	0.74 - 0.94"	19 - 24 mm	1.5 lbs	0.70 kg	3.94" / 100 mm
DS24-29	Double Seal purge system - Flexible 24 - 29 mm i/d	0.94 - 1.14"	24 - 29 mm	1.5 lbs	0.75 kg	3.94" / 100 mm
DS29-34	Double Seal purge system - Flexible 29 - 34 mm i/d	1.14 - 1.33"	29 - 34 mm	1.5 lbs	0.75 kg	3.94" / 100 mm
DS34-38	Double Seal purge system - Flexible 34 - 38 mm i/d	1.33 - 1.49"	34 - 38 mm	1.5 lbs	0.80 kg	3.94" / 100 mm

DS38-43 to DS290-320 are supplied with rigid connector as standard

Optional flexible connectors are available as accessory in two lengths FC120 (4.7" / 120 mm) / FC240 (9.4" / 240 mm)

DS38-43	Double Seal purge system - Rigid 38 - 43 mm i/d	1.49 - 1.69"	38 - 43 mm	1.5 lbs	0.85 kg	3.94" / 100 mm
DS43-48	Double Seal purge system - Rigid 43 - 48 mm i/d	1.69 - 1.88"	43 - 48 mm	2 lbs	0.90 kg	3.94" / 100 mm
DS47-53	Double Seal purge system - Rigid 47 - 53 mm i/d	1.85 - 2.08"	47 - 53 mm	2 lbs	0.95 kg	3.94" / 100 mm
DS52-58	Double Seal purge system - Rigid 52 - 58 mm i/d	2.04 - 2.28"	52 - 58 mm	2 lbs	1.00 kg	3.94" / 100 mm
DS64-72	Double Seal purge system - Rigid 64 - 72 mm i/d	2.51 - 2.83"	64 - 72 mm	2 lbs	1.10 kg	3.94" / 100 mm
DS78-86	Double Seal purge system - Rigid 78 - 86 mm i/d	3.07 - 3.38"	78 - 86 mm	3 lbs	1.20 kg	3.94" / 100 mm
DS90-101	Double Seal purge system - Rigid 90 - 101 mm i/d	3.54 - 3.97"	90 - 101 mm	3 lbs	1.30 kg	3.94" / 100 mm
DS100-112	Double Seal purge system - Rigid 100 - 112 mm i/d	3.93 - 4.40"	100 - 112 mm	3 lbs	1.40 kg	3.94" / 100 mm
DS120-130	Double Seal purge system - Rigid 120 - 130 mm i/d	4.72 - 5.11"	120 - 130 mm	3 lbs	1.50 kg	3.94" / 100 mm
DS124-138	Double Seal purge system - Rigid 124 - 138 mm i/d	4.88 - 5.43"	124 - 138 mm	3 lbs	1.60 kg	3.94" / 100 mm
DS144-155	Double Seal purge system - Rigid 144 - 155 mm i/d	5.66 - 6.10"	144 - 155 mm	4 lbs	1.70 kg	3.94" / 100 mm
DS150-165	Double Seal purge system - Rigid 150 - 165 mm i/d	5.90 - 6.49"	150 - 165 mm	4 lbs	1.80 kg	7.08" / 180 mm
DS197-206	Double Seal purge system - Rigid 197 - 206 mm i/d	7.75 - 8.11"	197 - 206 mm	4 lbs	2.00 kg	7.08" / 180 mm
DS209-220	Double Seal purge system - Rigid 209 - 220 mm i/d	8.22 - 8.66"	209 - 220 mm	5 lbs	2.20 kg	7.08" / 180 mm
DS246-257	Double Seal purge system - Rigid 246 - 257 mm i/d	9.68 - 10.11"	246 - 257 mm	5 lbs	2.40 kg	7.08" / 180 mm
DS260-280	Double Seal purge system - Rigid 260 - 280 mm i/d	10.23 - 11.02"	260 - 280 mm	5 lbs	2.60 kg	7.08" / 180 mm
DS290-320	Double Seal purge system - Rigid 290 - 320 mm i/d	11.41 - 12.59"	290 - 320 mm	6 lbs	3.00 kg	7.08" / 180 mm



Single Gas Finger for smaller pipe and tubes



Shown with flexible hose connection for purging elbows and fittings.

HANDY PURGE 100 SC

20.94

OFF

ON

PURGE OXYGEN MONITOR

**PPM**

PIPE PURGE

# PURGE OXYGEN MONITOR



0.01 % - 20.9 % Oxygen ( $O_2$ ) / 100 ppm - 209,000 ppm



AN OGG GROUP BRAND

www.PURGEMASTERS.COM



## Self calibrating

### The welders' toolbox monitor

Inert gas welding requires the exclusion of oxygen from the weld zone during the welding process. Prior to the welding process, the residual oxygen concentration must be reduced to a required minimum. The Handy Purge 100 is specifically designed to indicate oxygen concentration up to 0.01% and to exactly measure oxygen concentration up to 0.1%. Within this range, it is absolutely safe to weld and produce an oxygen-free weld seam (exceptions include special metals such as titanium, etc.).

The Handy Purge 100 can be used both for continuous monitoring during the welding process and for taking samples. Routine inspections for quality control are extremely simplified using this device. The analyser works with all purge systems and argon welding systems. It is small, easy to handle and has a rugged enclosure.

## FEATURES AND ADVANTAGES

- Self calibrating
- Minimum waiting time: the device indicates exactly when the residual oxygen concentration of a purge gas is low enough to start welding
- Reduced purge gas consumption: exact monitoring of the residual oxygen avoids unnecessary purge gas consumption and allows producing oxygen-free weld seams
- Top-quality weld seams
- Top quality is guaranteed, as too early welding and hence porous, coloured or even charred weld seams can be avoided
- Eliminates guess work



Plastic carry case box (HP100SCP7)



Replacement sensor (HP100SCS)

### The kit consists of:

- Handy Purge 100 Monitor
- 1 m hose with flow adapter
- Stainless steel probe
- Vacuum hand pump
- Plastic carry case
- Instructions
- Calibration certificate

## TECHNICAL SPECIFICATION

DESCRIPTION	MEASUREMENTS
Part Number	HP100SC
Measuring range	0.01 % - 20.9 % Oxygen (O <sub>2</sub> ) (100 ppm - 209,000 ppm)
Accuracy	at 20% ± 0.2% at 2% ± 0.02%
Dimensions	6 x 3 x 1" / 155 x 81 x 38 mm
Power source	Battery type PP3 9V
Display	LCD (Liquid Crystal Display)
Weight	0.5 lbs / 0.20 kg
SHIPPING WEIGHTS AND DIMENSIONS	
Dimensions	9.05 x 7.48 x 1.96" / 230 x 190 x 50 mm
Weight	1.5 lbs / 0.60 kg



# PIPE STOPPERS

1.5 - 72" / 40 - 1,800 mm



AN OGG GROUP BRAND



## Expandable test plugs for purging and general pipe blocking

Pipe stoppers (or drain plugs) are used to temporarily seal the end of a pipe or opening for many different testing applications. Pipe stoppers are mainly used to seal off from water, gases and foreign objects in newly laid pipes, or pipework systems that are under repair.

PPM's range of pipe stoppers is available in a number of different styles to suit many applications for pipe sizes. Bespoke pipe stoppers are also available upon request for pressure testing.

## HOW IT WORKS

The pipe stopper consists of a central spindle/shaft on which two plates are fitted with a natural rubber tyre (ring) between them. A wing nut on the shaft moves the two plates together, compressing the tyre and making the seal in the pipe. These stoppers can also be supplied with a hollow shaft version for screwing on standard hose connections or for using fixed or free nipple caps.

Expandable pipe stoppers are available in three different types.



## Sizes: 1.5 - 6" / 38 - 150 mm

Nylon plugs are the standard drain plugs for testing leak tightness of foul water lines at the time of installation.

Furthermore, the range of sizes make these plugs ideal for a number of other applications in the water and gas industries as well as applications in all other industries where pipes are used or where there are holes to be blocked.



## NYLON EXPANDING PIPE STOPPER SIZING AND SPECIFICATION

PART NO..	PIPE SIZE INTERNAL NOMINAL DIAMETER		WILL FIT PIPES WITH INTERNAL DIAMETER		MINIMUM INSERTION INTO PIPE		OVERALL LENGTH	DIAMETER OF WATERWAY	MAXIMUM ALLOWABLE BACK PRESSURE		WEIGHT (LBS / KG)	
NES38	1.5"	38 mm	1.49 - 1.65"	38 - 42 mm	1.4"	36 mm	58 mm	n/a solid	15 psi	1 bar	1 lbs	0.05 kg
NES50	2"	50 mm	1.90 - 2.44"	48.5 - 62.2 mm	1.4"	36 mm	110 mm	0.5" bsp	15 psi	1 bar	1 lbs	0.05 kg
NES63	2.5"	63 mm	2.55 - 3.03"	65 - 77 mm	1.4"	36 mm	110 mm	0.5" bsp	10 psi	0.7 bar	1 lbs	0.10 kg
NES75	3"	75 mm	2.91 - 3.38"	74 - 86 mm	1.4"	36 mm	110 mm	0.5" bsp	10 psi	0.7 bar	1 lbs	0.10 kg
NES88	3.5"	88 mm	3.22 - 3.77"	82 - 96 mm	1.4"	36 mm	110 mm	0.5" bsp	10 psi	0.7 bar	1 lbs	0.10 kg
NES100	4"	100 mm	3.74 - 4.13"	95 - 105 mm	1.4"	36 mm	110 mm	0.5" bsp	5 psi	0.3 bar	1 lbs	0.15 kg
NES115	4.5"	115 mm	4.48 - 4.88"	114 - 124 mm	1.4"	36 mm	110 mm	0.5" bsp	5 psi	0.3 bar	1 lbs	0.20 kg
NES125	5"	125 mm	4.60 - 5.00"	117 - 127 mm	1.6"	40 mm	110 mm	0.5" bsp	5 psi	0.3 bar	1 lbs	0.20 kg
NES150	6"	150 mm	5.74 - 6.10"	146 - 155 mm	1.65"	42 mm	110 mm	0.5" bsp	5 psi	0.3 bar	1 lbs	0.25 kg

All plugs conform to British Standards BS8005 for low pressure testing and sealing of pipes.



**Sizes: 1.5 - 24" / 40 - 600 mm**

To complement the range of nylon expanding plugs, we offer all sizes of aluminium plugs.

These are provided in sizes from 1.5" / 40 mm upwards and are suitable for more heavy duty applications, heat resistant up to 90°C (194°F).

These plugs are typically used for general sealing of pipes and purging.



## ALUMINIUM EXPANDING PIPE STOPPER SIZING AND SPECIFICATION

PART NO.	PIPE SIZE INTERNAL		WILL FIT PIPES WITH		MINIMUM		OVERALL	DIAMETER	MAXIMUM		WEIGHT	
	NOMINAL	DIAMETER	INTERNAL	DIAMETER	INSERTION	INTO PIPE			ALLOWABLE BACK	PRESSURE	(LBS / KG)	
AES1.5	1.5"	40 mm	1.49 - 1.96"	38 - 50 mm	1.8"	45 mm	94 mm	0.5"	30 psi	2 bar	1 lbs	0.17 kg
AES2	2"	50 mm	1.92 - 2.44"	49 - 62 mm	1.7"	43 mm	90 mm	0.5"	30 psi	2 bar	1 lbs	0.22 kg
AES2.5	2.5"	65 mm	2.44 - 3.03"	62 - 77 mm	1.7"	43 mm	92 mm	0.5"	30 psi	2 bar	1 lbs	0.27 kg
AES3	3"	75 mm	2.87 - 3.50"	73 - 89 mm	1.7"	43 mm	94 mm	0.5"	20 psi	1.4 bar	1 lbs	0.31 kg
AES3.5	3.5"	90 mm	3.30 - 4.05"	84 - 103 mm	2.1"	53 mm	96 mm	0.5"	15 psi	1 bar	1 lbs	0.36 kg
AES4	4"	100 mm	3.70 - 4.33"	94 - 110 mm	1.9"	47 mm	94 mm	0.5"	10 psi	0.7 bar	1 lbs	0.36 kg
AES4.5	4.5"	114 mm	4.40 - 5.11"	112 - 130 mm	2.2"	56 mm	140 mm	0.5"	10 psi	0.7 bar	1 lbs	0.47 kg
AES5	5"	125 mm	4.92 - 5.59"	125 - 142 mm	2.3"	60 mm	95 mm	0.5"	10 psi	0.7 bar	1 lbs	0.79 kg
AES6	6"	150 mm	5.74 - 6.61"	146 - 168 mm	1.9"	48 mm	96 mm	0.5"	10 psi	0.7 bar	1 lbs	0.70 kg
AES7	7"	175 mm	6.88 - 7.87"	175 - 200 mm	2.5"	64 mm	100 mm	1"	7 psi	0.5 bar	4 lbs	1.92 kg
AES8	8"	200 mm	7.59 - 8.66"	193 - 220 mm	2.5"	64 mm	100 mm	1"	7 psi	0.5 bar	3 lbs	1.59 kg
AES9	9"	225 mm	8.66 - 9.44"	220 - 240 mm	2.5"	64 mm	170 mm	1"	7 psi	0.5 bar	4 lbs	2.06 kg
AES10	10"	250 mm	9.64 - 10.62"	245 - 270 mm	2.9"	73 mm	178 mm	1"	7 psi	0.5 bar	5 lbs	2.52 kg
AES11	11"	275 mm	10.78 - 12.91"	274 - 328 mm	4"	100 mm	200 mm	1"	7 psi	0.5 bar	7 lbs	3.45 kg
AES12	12"	300 mm	11.61 - 12.79"	295 - 325 mm	3"	77 mm	200 mm	1"	7 psi	0.5 bar	7 lbs	3.42 kg
AES13	13"	325 mm	12.79 - 14.17"	325 - 360 mm	4.7"	120 mm	230 mm	1"	5 psi	0.3 bar	10 lbs	4.75 kg
AES14	14"	350 mm	13.77 - 15.15"	350 - 385 mm	4.3"	110 mm	215 mm	1"	5 psi	0.3 bar	15 lbs	6.95 kg
AES15	15"	375 mm	14.56 - 16.14"	370 - 410 mm	4.3"	110 mm	225 mm	1"	5 psi	0.3 bar	11 lbs	5.35 kg
AES16	16"	400 mm	15.35 - 17.12"	390 - 435 mm	4.3"	110 mm	225 mm	1"	5 psi	0.3 bar	13 lbs	5.90 kg
AES18	18"	450 mm	17.51 - 19.48"	445 - 495 mm	4.3"	110 mm	225 mm	2"	5 psi	0.3 bar	19 lbs	8.75 kg
AES20	20"	500 mm	19.48 - 21.65"	495 - 550 mm	5.7"	145 mm	255 mm	2"	5 psi	0.3 bar	24 lbs	11.3 kg
AES21	21"	525 mm	19.48 - 21.65"	495 - 550 mm	5.7"	145 mm	255 mm	2"	3 psi	0.2 bar	24 lbs	11.3 kg
AES24	24"	600 mm	21.65 - 25.59"	595 - 650 mm	5.7"	145 mm	255 mm	2"	3 psi	0.2 bar	34 lbs	15.85 kg

**All plugs conform to British Standards BS8005 for low pressure testing and sealing of pipes.**



**Sizes: 1.5 - 36" / 40 - 900 mm**

PPM also manufactures a range of steel plugs from 1.5" / 40 mm upwards in diameter.

These plugs are typically suitable for more heavy duty applications, heat resistant up to 90°C (194°F).

These plugs are typically used for general sealing of pipes and purging.



**Steel  
multi-lock  
stopper**

## STEEL EXPANDING PIPE STOPPER SIZING AND SPECIFICATION

PART NO.	PIPE SIZE INTERNAL NOMINAL DIAMETER		WILL FIT PIPES WITH INTERNAL DIAMETER		MINIMUM INSERTION INTO PIPE		OVERALL LENGTH	DIAMETER OF WATERWAY	MAXIMUM ALLOWABLE BACK PRESSURE		WEIGHT (LBS / KG)	
SES1.5	1.5"	40 mm	1.45 - 1.96"	37 - 50 mm	1.2"	31 mm	81.5 mm	0.5"	30 psi	2 bar	1 lbs	0.16 kg
SES2	2"	50 mm	1.96 - 2.40"	50 - 61 mm	1.3"	32.7 mm	82.8 mm	0.5"	30 psi	2 bar	1 lbs	0.18 kg
SES2.5	2.5"	65 mm	2.40 - 2.95"	61 - 75 mm	1.3"	33.2 mm	80.5 mm	0.5"	30 psi	2 bar	1 lbs	0.26 kg
SES3	3"	75 mm	2.87 - 3.34"	73 - 85 mm	1.3"	34 mm	80.5 mm	0.5"	20 psi	1.4 bar	1 lbs	0.28 kg
SES3.5	3.5"	89 mm	3.30 - 3.93"	84 - 100 mm	1.6"	41 mm	81 mm	0.5"	15 psi	1 bar	1 lbs	0.36 kg
SES4	4"	100 mm	3.70 - 4.25"	94 - 108 mm	1.5"	37.5 mm	83.3 mm	0.5"	10 psi	0.7 bar	1 lbs	0.41 kg
SES4.5	4.5"	114 mm	4.33 - 4.92"	110 - 125 mm	1.6"	40 mm	83.3 mm	0.5"	10 psi	0.7 bar	1 lbs	0.58 kg
SES5	5"	125 mm	4.88 - 5.47"	124 - 139 mm	1.5"	37 mm	83.3 mm	0.5"	10 psi	0.7 bar	1 lbs	0.60 kg
SES6	6"	150 mm	5.90 - 6.29"	150 - 160 mm	1.6"	39.7 mm	83.3 mm	0.5"	10 psi	0.7 bar	2 lbs	0.75 kg
SES7	7"	175 mm	6.88 - 7.87"	175 - 200 mm	1.8"	46 mm	130 mm	1"	7 psi	0.5 bar	3 lbs	1.56 kg
SES8	8"	200 mm	7.67 - 8.46"	195 - 215 mm	1.5"	37 mm	130 mm	1"	7 psi	0.5 bar	3 lbs	1.47 kg
SES9	9"	225 mm	8.26 - 9.05"	210 - 230 mm	2.3"	58 mm	150 mm	1"	7 psi	0.5 bar	4 lbs	1.93 kg
SES10	10"	250 mm	9.64 - 10.23"	245 - 260 mm	2.2"	55 mm	150 mm	1"	7 psi	0.5 bar	6 lbs	2.55 kg
SES12	12"	300 mm	11.65 - 12.59"	296 - 320 mm	3.3"	85 mm	150 mm	1"	7 psi	0.5 bar	8 lbs	3.72 kg
SES14	14"	350 mm	13.38 - 15.15"	340 - 385 mm	3.3"	85 mm	210 mm	1"	5 psi	0.3 bar	14 lbs	6.54 kg
SES15	15"	375 mm	14.56 - 16.33"	370 - 415 mm	3.9"	100 mm	210 mm	1"	5 psi	0.3 bar	15 lbs	7.00 kg
SES16	16"	400 mm	15.35 - 16.92"	390 - 430 mm	3.7"	95 mm	210 mm	1"	5 psi	0.3 bar	19 lbs	8.45 kg
SES18	18"	450 mm	17.63 - 19.48"	448 - 495 mm	3.9"	100 mm	220 mm	1"	5 psi	0.3 bar	23 lbs	10.6 kg

Below stoppers are multi-lock

SES20	20"	500 mm	19.29 - 20.86"	490 - 530 mm	3.7"	95 mm	126 mm	2"	5 psi	0.3 bar	23 lbs	10.38 kg
SES21	21"	525 mm	20.27 - 21.85"	515 - 555 mm	3.7"	95 mm	126 mm	2"	3 psi	0.2 bar	25 lbs	11.28 kg
SES24	24"	600 mm	23.22 - 24.80"	590 - 630 mm	3.7"	95 mm	126 mm	2"	3 psi	0.2 bar	34 lbs	15.57 kg
SES28	28"	700 mm	27.16 - 28.74"	690 - 730 mm	3.7"	95 mm	126 mm	2"	3 psi	0.2 bar	44 lbs	19.90 kg
SES30	30"	750 mm	29.13 - 30.70"	740 - 780 mm	3.7"	95 mm	126 mm	2"	3 psi	0.2 bar	55 lbs	25.09 kg
SES32	32"	800 mm	31.10 - 32.67"	790 - 830 mm	3.7"	95 mm	125 mm	2"	3 psi	0.2 bar	64 lbs	28.90 kg
SES36	36"	900 mm	35.03 - 36.61"	890 - 930 mm	3.7"	95 mm	126 mm	2"	3 psi	0.2 bar	77 lbs	35.08 kg

**All plugs conform to British Standards BS8005 for low pressure testing and sealing of pipes.  
Larger sizes available upon request.**



Sizes: 2 - 72" / 50 - 1,800 mm

## Single inflatable dams for blocking and testing

PPM offers a range of inflatable stoppers in various shapes and sizes, suitable for many applications. Made from a natural rubber bladder covered in waterproof polyurethane coated nylon to prevent friction and static electricity build up.

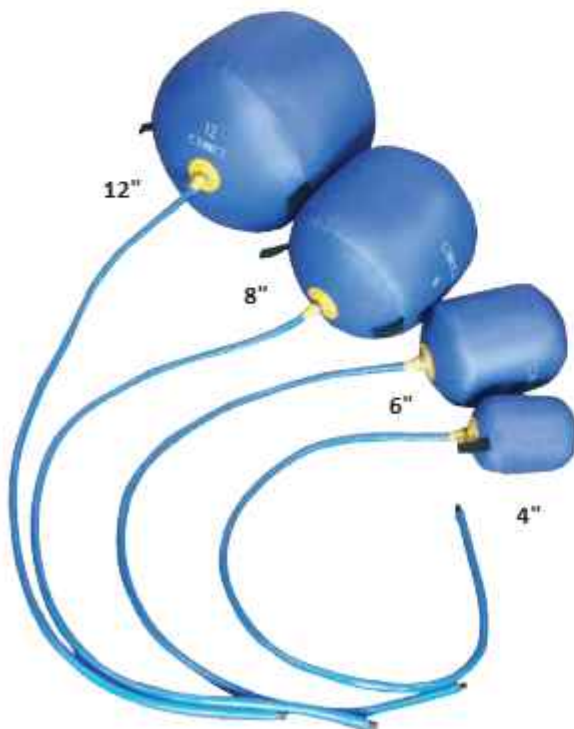
There are six different types available:

- **Cylindrical** - this stopper is generally used for blocking pipes where access is restricted
- **Spherical** - this stopper has less contact area than cylindrical stoppers, and is most suited to applications where access is further limited. Due to its shape the spherical inflatable stopper can be used at any angle
- **Square / rectangular** - this stopper has a variety of applications, including in air conditioning ducting and venting
- **Doughnut** - this stopper requires minimal space and is perfectly suited to larger diameter pipes as there is less inflation required
- **Sausage** - this stopper has more contact area between the stopper and the pipe wall enabling it to hold back more pressure
- **Heat resistant** - this stopper is made of a specially designed Kevlar and Nomex mix material to withstand temperatures up to 500°C (932°F) for applications involving higher temperatures such as pre heating



## Holdback pressure - unsupported back pressure is 20% of the inflation pressure

Each inflatable stopper comes with an inflation hose fitted with a Schrader valve enabling inflation with a standard airline, bicycle or foot pump.



PPM's inflatable stoppers are supplied standard with no through tube. Through tubes can be supplied on request at extra cost when the stoppers are required for weld purging applications. When deflated, the inflatable stoppers can be inserted and withdrawn with ease when access is restricted.

## INFLATABLE PIPE STOPPERS SIZING AND SPECIFICATION

PART NO.	DESCRIPTION	NOMINAL PIPE SIZE		INTERNAL DIAMETER RANGE (I/D)		WEIGHT (LBS / KG)		INFLATION PRESSURE	
IPS2	2" Inflatable Pipe Stopper	2"	50 mm	1.77 - 2.16"	45 - 55 mm	0.74 lbs	0.34 kg	10 psi	0.7 bar
IPS3	3" Inflatable Pipe Stopper	3"	75 mm	2.75 - 3.14"	70 - 80 mm	0.74 lbs	0.34 kg	10 psi	0.7 bar
IPS4	4" Inflatable Pipe Stopper	4"	100 mm	3.74 - 4.13"	95 - 105 mm	0.74 lbs	0.34 kg	10 psi	0.7 bar
IPS5	5" Inflatable Pipe Stopper	5"	125 mm	4.72 - 5.11"	120 - 130 mm	0.83 lbs	0.38 kg	10 psi	0.7 bar
IPS6	6" Inflatable Pipe Stopper	6"	150 mm	5.70 - 6.10"	145 - 155 mm	0.83 lbs	0.38 kg	6 psi	0.4 bar
IPS7	7" Inflatable Pipe Stopper	7"	175 mm	6.69 - 7.08"	170 - 180 mm	1.54 lbs	0.70 kg	6 psi	0.4 bar
IPS8	8" Inflatable Pipe Stopper	8"	200 mm	7.67 - 8.07"	195 - 205 mm	2 lbs	0.90 kg	6 psi	0.4 bar
IPS9	9" Inflatable Pipe Stopper	9"	225 mm	8.66 - 9.05"	220 - 230 mm	2 lbs	0.95 kg	4 psi	0.3 bar
IPS10	10" Inflatable Pipe Stopper	10"	250 mm	9.64 - 10.03"	245 - 255 mm	2 lbs	1.00 kg	4 psi	0.3 bar
IPS11	11" Inflatable Pipe Stopper	11"	275 mm	10.62 - 11.02"	270 - 280 mm	2 lbs	1.05 kg	4 psi	0.3 bar
IPS12	12" Inflatable Pipe Stopper	12"	300 mm	11.61 - 12.00"	295 - 305 mm	2 lbs	1.10 kg	3 psi	0.2 bar
IPS13	13" Inflatable Pipe Stopper	13"	325 mm	12.59 - 12.99"	320 - 330 mm	3 lbs	1.20 kg	3 psi	0.2 bar
IPS14	14" Inflatable Pipe Stopper	14"	350 mm	13.58 - 13.97"	345 - 355 mm	3 lbs	1.30 kg	3 psi	0.2 bar
IPS15	15" Inflatable Pipe Stopper	15"	375 mm	14.56 - 14.96"	370 - 380 mm	3 lbs	1.50 kg	3 psi	0.2 bar
IPS16	16" Inflatable Pipe Stopper	16"	400 mm	15.55 - 15.94"	395 - 405 mm	4 lbs	1.70 kg	3 psi	0.2 bar
IPS17	17" Inflatable Pipe Stopper	17"	425 mm	16.53 - 16.92"	420 - 430 mm	4 lbs	1.75 kg	3 psi	0.2 bar
IPS18	18" Inflatable Pipe Stopper	18"	450 mm	17.51 - 17.91"	445 - 455 mm	4 lbs	1.80 kg	2 psi	0.1 bar
IPS19	19" Inflatable Pipe Stopper	19"	475 mm	18.50 - 18.89"	470 - 480 mm	4 lbs	1.85 kg	2 psi	0.1 bar
IPS20	20" Inflatable Pipe Stopper	20"	500 mm	19.48 - 19.88"	495 - 505 mm	4 lbs	1.90 kg	2 psi	0.1 bar
IPS21	21" Inflatable Pipe Stopper	21"	525 mm	20.47 - 20.86"	520 - 530 mm	5 lbs	2.20 kg	2 psi	0.1 bar
IPS22	22" Inflatable Pipe Stopper	22"	550 mm	21.45 - 21.85"	545 - 555 mm	5 lbs	2.40 kg	2 psi	0.1 bar
IPS24	24" Inflatable Pipe Stopper	24"	600 mm	23.42 - 23.81"	595 - 605 mm	5 lbs	2.50 kg	2 psi	0.1 bar
IPS28	28" Inflatable Pipe Stopper	28"	700 mm	27.36 - 27.75"	695 - 705 mm	5 lbs	2.70 kg	2 psi	0.1 bar
IPS30	30" Inflatable Pipe Stopper	30"	750 mm	29.33 - 29.72"	745 - 755 mm	6 lbs	3.00 kg	2 psi	0.1 bar
IPS32	32" Inflatable Pipe Stopper	32"	800 mm	31.29 - 31.69"	795 - 805 mm	7 lbs	3.40 kg	1.5 psi	0.1 bar
IPS34	34" Inflatable Pipe Stopper	34"	850 mm	33.26 - 33.66"	845 - 855 mm	7 lbs	3.60 kg	1.5 psi	0.1 bar
IPS36	36" Inflatable Pipe Stopper	36"	900 mm	35.23 - 35.62"	895 - 905 mm	8 lbs	3.80 kg	1 psi	0.07 bar
IPS42	42" Inflatable Pipe Stopper	42"	1,050 mm	41.34 - 41.73"	1,050 - 1,060 mm	11 lbs	5.00 kg	0.5 psi	0.03 bar
IPS44	44" Inflatable Pipe Stopper	44"	1,100 mm	43.11 - 43.50"	1,095 - 1,105 mm	12 lbs	5.50 kg	0.5 psi	0.03 bar
IPS48	48" Inflatable Pipe Stopper	48"	1,200 mm	47.04 - 47.44"	1,195 - 1,205 mm	13 lbs	6.00 kg	0.5 psi	0.03 bar
IPS54	54" Inflatable Pipe Stopper	54"	1,350 mm	53.35 - 53.74"	1,355 - 1,365 mm	17 lbs	7.50 kg	0.5 psi	0.03 bar
IPS60	60" Inflatable Pipe Stopper	60"	1,500 mm	58.85 - 59.25"	1,495 - 1,505 mm	19 lbs	8.50 kg	0.5 psi	0.03 bar
IPS72	72" Inflatable Pipe Stopper	72"	1,800 mm	71.45 - 71.85"	1,815 - 1,825 mm	24 lbs	11.00 kg	0.5 psi	0.03 bar

**Pipe stoppers are supplied with Schrader valve.**  
**Larger sizes available upon request with 10 mm / 0.39" expansion range.**